

# **BALDOR® • RELIANCE**

**Product Information Packet**

**ELECTRIC MOTOR WHOLESAL.COM**

**1250**

**2HP,1800RPM,1PH,60HZ,3634L,BUFF**

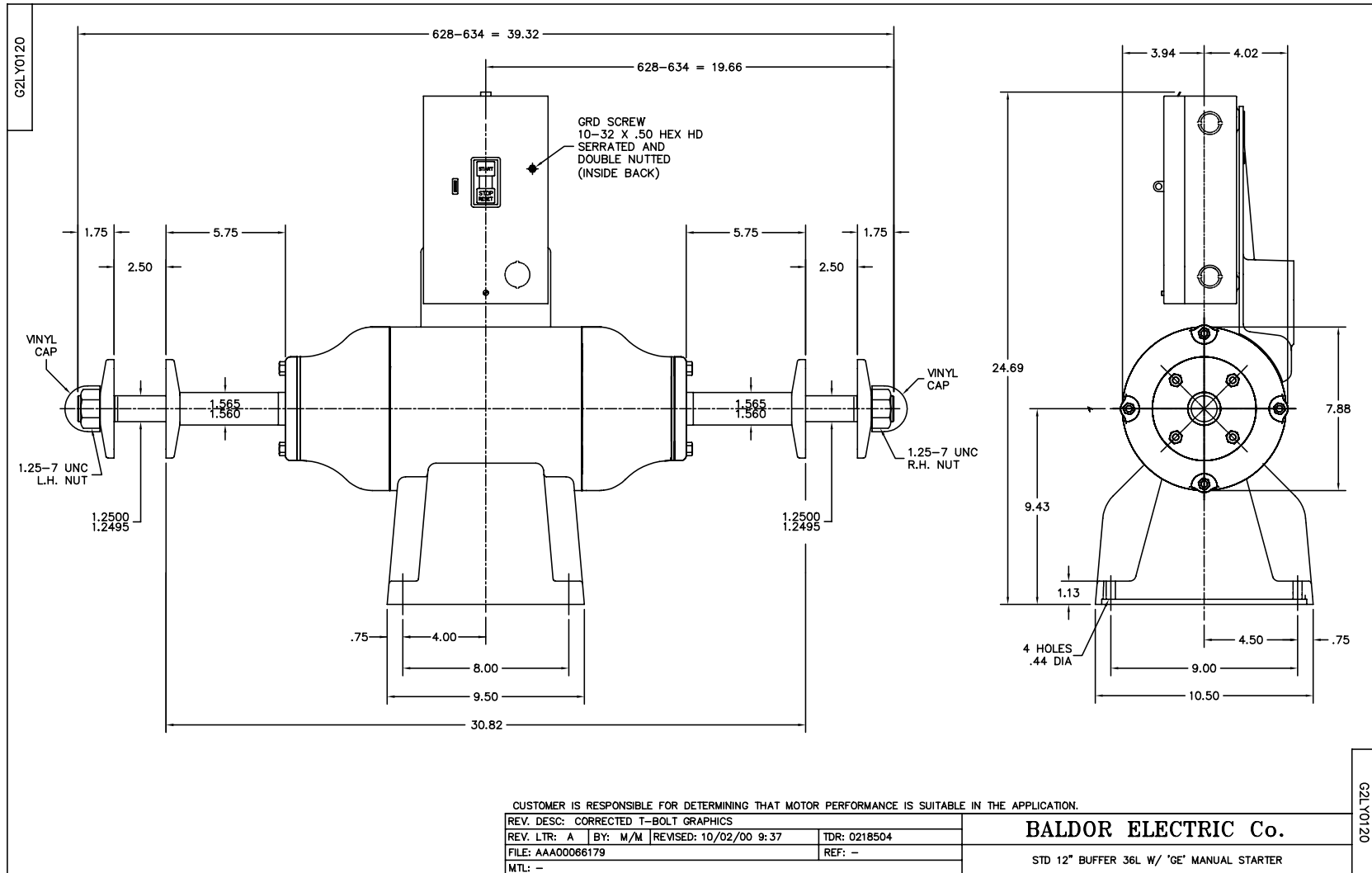
Nameplate NP1625			
CAT.NO.	1250		
HP	2	VOLTS	115/230
PHASE	1	AMPS	20/10
HZ	60	RPM	1800
SER.NO			
SPEC.	G12-120A-0002		

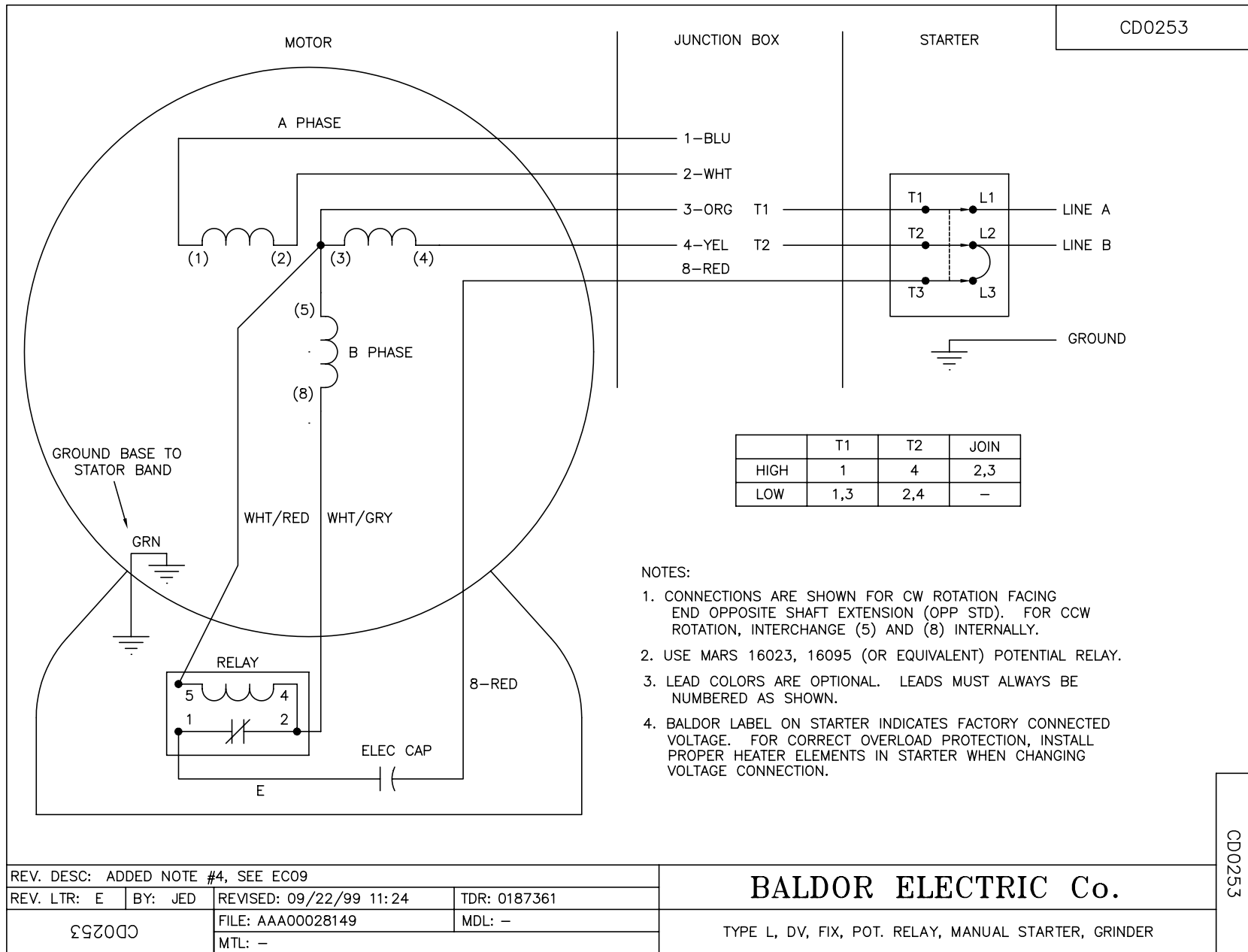
Parts List		
Part Number	Description	Quantity
SA051567	SA G12-120A-0002	1.000 EA
RA046414	RA G12-120A-0002	1.000 EA
RE5019	115V MARS RELAY PT #16036	1.000 EA
EC1645A06SP	ELEC CAP, 645-774 MFD, 125V, 2.06D X 4.	1.000 EA
G2BA1000A01	BASE, MACH	1.000 EA
10XN4414A20	7/16-14 X 1-1/4 HEX HD CAP SCREW	2.000 EA
HW1001A44	WASHER,7/16 SPLT LK, ZN	2.000 EA
HW1000A45X	7/16 USS FLAT WASHER X	2.000 EA
HA6003A06	CLAMP, CAPACITOR PLATED	1.000 EA
52XN1032A06	SCREW, SER HX SLT HD, ZN X	1.000 EA
52XN0632A06	SCREW, SER HX SLT HD, ZN X	2.000 EA
HW1001A06	WASHER, #6 SPLIT LOCK, ZINC	2.000 EA
LD5000A01	LEAD ASSY, ML1400DF14 W/(2) #10 RING 7"	1.000 EA
52XF1032G04	S0-32 X 1/4, HX HD SR SL	2.000 EA
HA6766A03	BRACKET FOR 'GE' MANUAL STARTERS	1.000 EA
19XB2514A20	1/4-14X1-1/4 HX WS, TY B	2.000 EA
HW1001A25	LOCKWASHER 1/4, ZINC PLT .493 OD, .255 I	2.000 EA
HA2025A01	LEAD BUSHING	1.000 EA
RM1006A01	GROMMET,#2196:.75ID,.9375GROOVE DIA,.062	1.000 EA
52XN1032A04	10-32X1/4 HX HD SLTD SER X	3.000 EA
51XF1032A08	10/32X1/2 HXWSHR HD, SL, TYPE F ,SERATED	1.000 EA
XY1032A02	10-32 HEX NUT DIRECTIONAL SERRATION	2.000 EA
G2CB4500	BASE COVER PLATE, 36L - 12 GRINDER (PLA	1.000 EA
52XF1032A06	10-32X3/8 HX SLTD SER TYFESKAY	4.000 EA

Parts List (continued)		
Part Number	Description	Quantity
36CB4516	36 LIPPED CB LID	1.000 EA
37GS1001SP	GASKET, CONDUIT BOX LID, .06 THICK LEXID	1.000 EA
51XW0832A07	8-32 X .44, TAPTITE II, HEX WSHR SLTD SE	4.000 EA
G2EP1900A01	ENDPLATE, MACH	2.000 EA
HW5100A08	W3118-035 WVY WSHR (WB)	2.000 EA
10XN3816A20	3/8-16X1 1/4 HEX HD CAP	8.000 EA
HW1001A38	LOCKWASHER 3/8, ZINC PLT .688 OD, .382 I	8.000 EA
HA3104A13	THRUBOLT 5/16-18 X 11.750 OHIO ROD	4.000 EA
HW1001A31	LOCKWASHER 5/16, ZINC PLT.591 OD, .319 I	4.000 EA
MN906	Baldor Buffer 9/10	1.000 EA
XY3118A12	5/16-18 HEX NUT DIRECTIONAL SERRATION	4.000 EA
HA6051SP	FLANGE, WHEEL, CAST	4.000 EA
HW3022J06	1/4X.625 ROLLED SPR PIN	2.000 EA
XZ2007A62SP	1 1/4-7 NUT LH HEX (NC)	1.000 EA
XZ2007A12SP	1 1/4-7 NUT RH HX(NC)(F/S)	1.000 EA
RM1010A07	VNYL CAP 1.875-21 701-89 BLACK S/R Q=1	2.000 EA
LB1009	LABEL,ROTATION DIRECTION (ON ROLLS)	1.000 EA
LB1092	LABEL, WARNING BUFFERS	1.000 EA
LB1112	LABEL GRDR STARTER BOX GR	1.000 EA
LB5024	TAG, CAUTION PRINT SHOP	1.000 EA
85XU0407S04	4X1/4 U DRIVE PIN STAINLESS	2.000 EA
G4GS5000	G14-23 GASKET X	1.000 EA
MJ1000A75	GREASE, POLYREX EM EXXON	0.050 LB
HA1000A45	DR11501.020 BRG GRD,B-N	1.000 EA

Parts List (continued)		
Part Number	Description	Quantity
MG1000G01	400-0116 BATTLESHIP GRAY LACQUER (55G)	0.017 GA
WD1000A15	3-520132-2 AMP FLAG (4M/RL NON-CANC/NON-	3.000 EA
CN1900A02	MAN. STARTER 'GE' NO. CR1062S3AAP2000, 3	1.000 EA
CN2006125B	HEATER, 'GE' NO. CR123C125B (FOR 'GE' ST	3.000 EA
LB1119	WARNING LABEL	1.000 EA
LB1125C01	STD (STOCK) CARTON LABEL BALDOR WITH FLA	1.000 EA
MG2000A02	RUST VETO-377-HF HOUGHTON	0.001 GA
NP1625	BUFFER, ALUM, UL	1.000 EA
G2PA1001	PACKAGING GROUP	1.000 EA

Accessories		
Part Number	Description	Multiplier
GA20	PEDESTAL INDUSTRIAL, CAST IRON 8"-14"	A8
BQ1-015-CC	1PH Brake, NEMA 1,110-125 VAC, 50/60Hz	E7
BQ1-015-CP	1PH Brake, Panel 110-125 VAC, 50/60 Hz	E7
BQ2-015-CC	1PH Brake,NEMA 1 208-230 VAC,50/60Hz	E7
BQ2-015-CP	1PH Brake, Panel 208-230 VAC, 50/60 Hz	E7





REV. DESC: ADDED NOTE #4, SEE EC09			
REV. LTR: E	BY: JED	REVISED: 09/22/99 11:24	TDR: 0187361
ΩΣD0C		FILE: AAA00028149	MDL: -
		MTL: -	

**BALDOR ELECTRIC Co.**

TYPE L, DV, FIX, POT. RELAY, MANUAL STARTER, GRINDER

CD0253