



**BALDOR® • RELIANCE **

**Product Information Packet**

**ELECTRIC MOTOR WHOLESAL.COM**

**MVM3546C**

**.75KW,1725RPM,3PH,60HZ,D80C,3428M,TEFC**

Part Detail							
Revision:	Q	Status:	PRD/A	Change #:		Proprietary:	No
Type:	AC	Prod. Type:	3428M	Elec. Spec:	34WG3254	CD Diagram:	
Enclosure:	TEFC	Mfg Plant:		Mech. Spec:	34G620	Layout:	
Frame:	D80C	Mounting:	F2	Poles:	04	Created Date:	
Base:	N	Rotation:	R	Insulation:	B	Eff. Date:	06-10-2011
Leads:	9#18	Literature:		Elec. Diagram:		Replaced By:	

**Nameplate NP1379L**

CAT.NO.	MVM3546C						
SPEC.	34G620-3254						
IEC FRAME	D80C	K.W.				.75 TE	
VOLTS	208-230/460						
AMP	3.8-3.6/1.8						
RPM	1725	I.P.				54	
HZ	60	PH				3	CL B
SER.F.	1.15	DES				B	CODE L
NEMA-NOM-EFF	75.5	PF				64	
RATING	40C AMB-CONT						
CC					USABLE AT 208V	3.8	
DE	6205	ODE				6203	
SER. #							
	SFA 4-3.8/1.9						

Parts List		
Part Number	Description	Quantity
SA007738	SA 34G620-3254	1.000 EA
RA004185	RA 34G620-3254	1.000 EA
NS2512A01	INSULATOR, CONDUIT BOX X	1.000 EA
34CB3002A	CB CAST W/.88 DIA HOLE	1.000 EA
51XB1016A07	10-16 X 7/16 HXWSSLD SERTYB	2.000 EA
11XW1032G06	10-32 X .38, TAPTITE II, HEX WSHR SLTD U	1.000 EA
34EP3102A01SP	FR ENDPLATE, MACH	1.000 EA
HW5100A03SP	WAVY WASHER (W1543-017)	1.000 EA
34EP3303A12	ENDPLATE, PU MOD.34 IEC D80C ENCL W/205	1.000 EA
51XN1032A20	10-32 X 1 1/4 HX WS SL SR	2.000 EA
34FN3002A01SP	EXTERNAL FAN, PLASTIC, .637/.639 HUB W/	1.000 EA
34FH4002A01SP	IEC FH NO GREASER	1.000 EA
51XW1032A06	10-32 X .38, TAPTITE II, HEX WSHR SLTD S	3.000 EA
34CB4517	CB LID 4 MTG HOLES .22 DIA STAMPED, FOR	1.000 EA
51XW0832A07	8-32 X .44, TAPTITE II, HEX WSHR SLTD SE	4.000 EA
HW4600B49SP	SEAL 0.938 X 1.624 X 0.250 SINGLE LIP DB	1.000 EA
HW2504E10	KEY, 6 MM X 1.000	1.000 EA
HA7000A11	KEY RETAINER 0.750 DIA SHAFTS	1.000 EA
MJ5001A01	46-665 RED SEALER	0.001 QT
XY1032A02	10-32 HEX NUT DIRECTIONAL SERRATION	4.000 EA
34GS1029A01	GASKET, CONDUIT BOX	1.000 EA
34GS1031A01	GASKET, FLAT CONDUIT BOX LID (LEXIDE)	1.000 EA
MG1000G27	PAINT- S9282E CHARCOAL GREY	0.014 GA
10XF0440S02	04-40 X 1/8 TYPE F HEX HD STAINLESS STIC	2.000 EA

Parts List (continued)		
Part Number	Description	Quantity
HA3100A45	THRUBOLT 10-32 X 8.875	4.000 EA
LB5040	INSTRUCTION TAG, AC & DC	1.000 EA
LB1125C01	STD (STOCK) CARTON LABEL BALDOR WITH FLA	1.000 EA
LC0005E01	CONN.DIA./WARNING LABEL (LC0005/LB1119)	1.000 EA
NP1379L	ALUM, IEC, UL CSA CC, W/O THERMAL, LASER	1.000 EA
34PA1005	PACKING GROUP, BALDOR	1.000 EA
PK3083T	STYROFOAM PACKING CRADLE W/TAPE	1.000 EA

**Performance Data at 460V, 60Hz, 1.0HP (Typical performance - Not guaranteed values)**

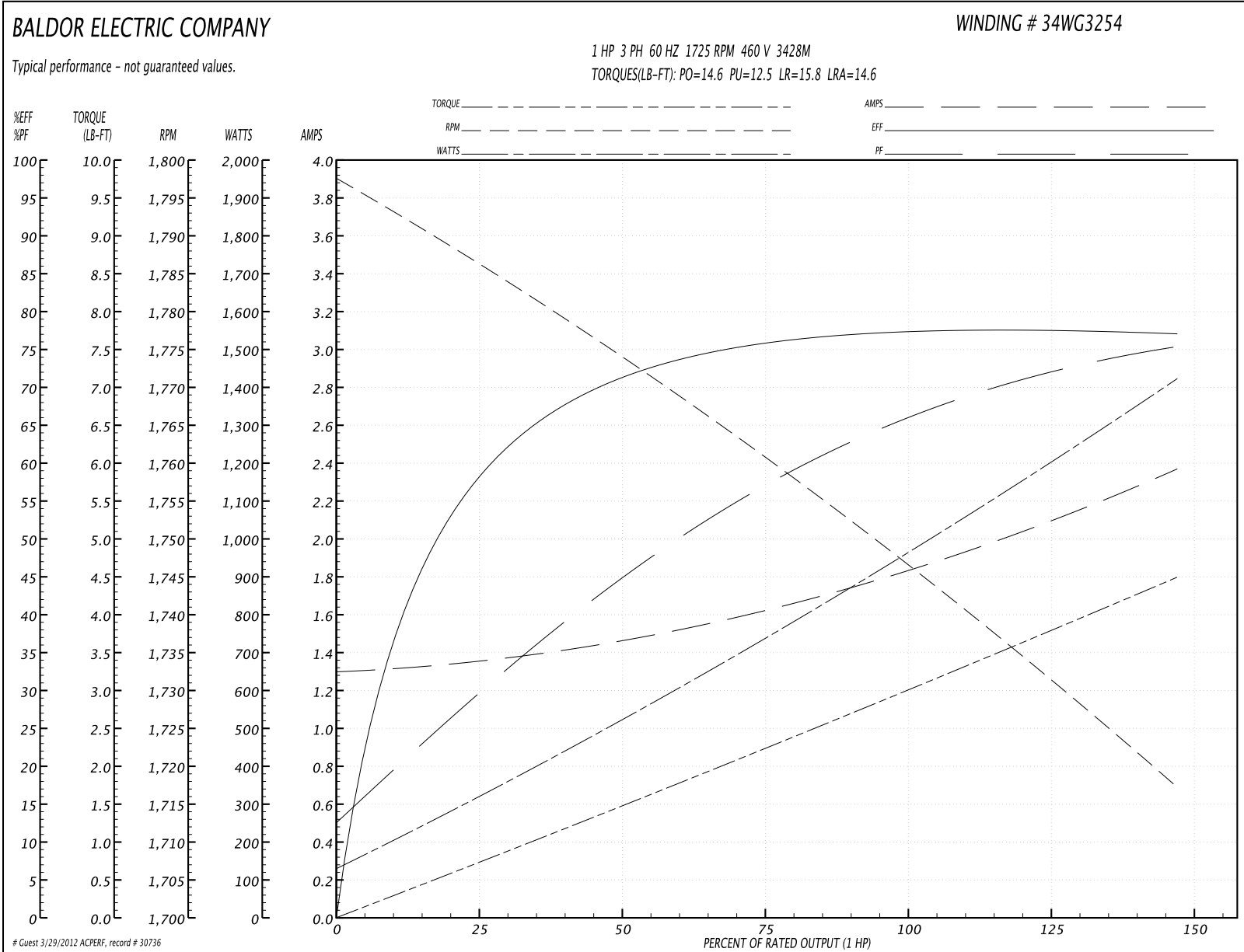
**General Characteristics**

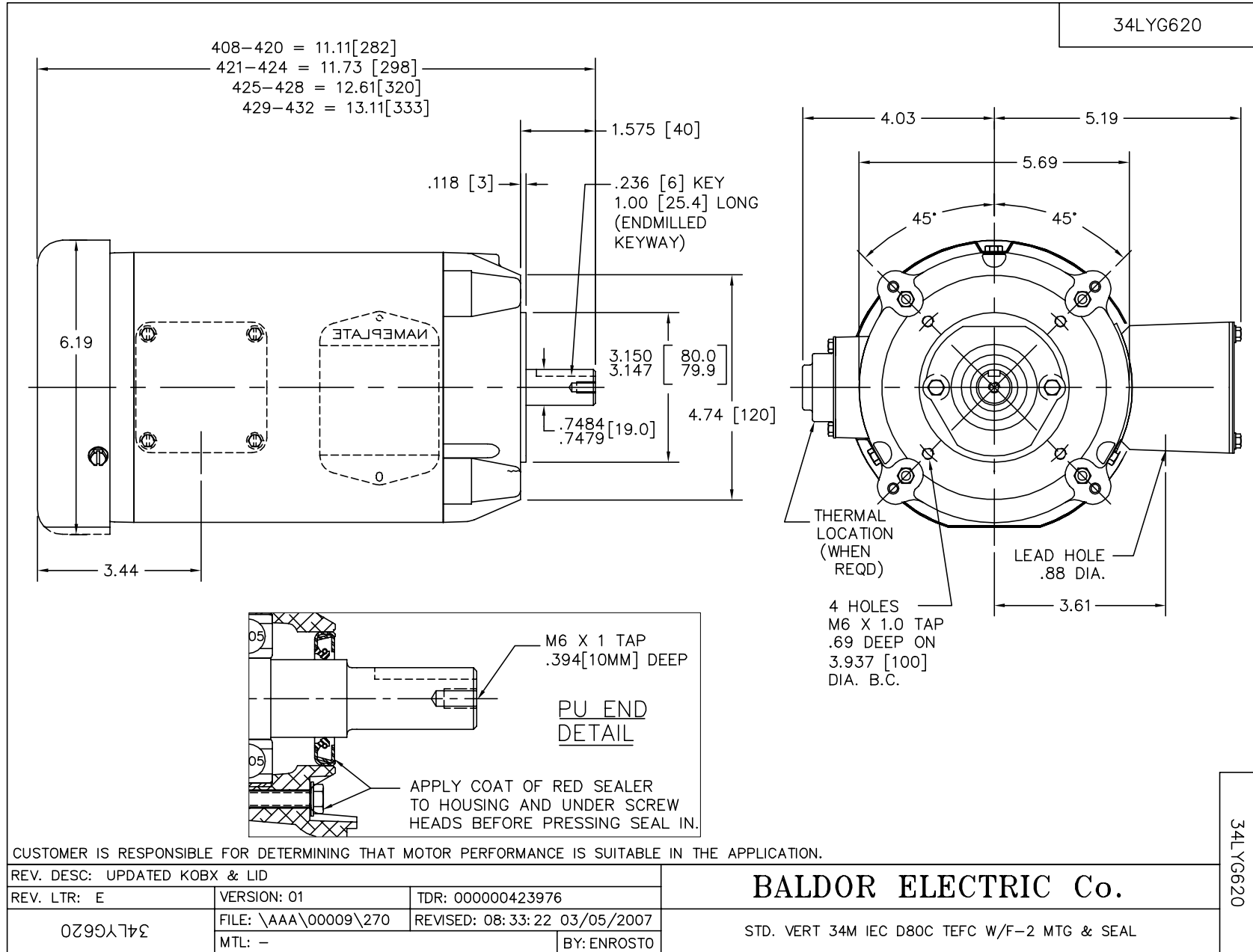
<b>Full Load Torque:</b>	3.0 LB-FT	<b>Start Configuration:</b>	DOL
<b>No-Load Current:</b>	1.3 Amps	<b>Break-Down Torque:</b>	14.6 LB-FT
<b>Line-line Res. @ 25°C.:</b>	12.3 Ohms A Ph / 0.0 Ohms B Ph	<b>Pull-Up Torque:</b>	12.5 LB-FT
<b>Temp. Rise @ Rated Load:</b>	66 C	<b>Locked-Rotor Torque:</b>	15.8 LB-FT
<b>Temp. Rise @ S.F. Load:</b>		<b>Starting Current:</b>	14.6 Amps

**Load Characteristics**

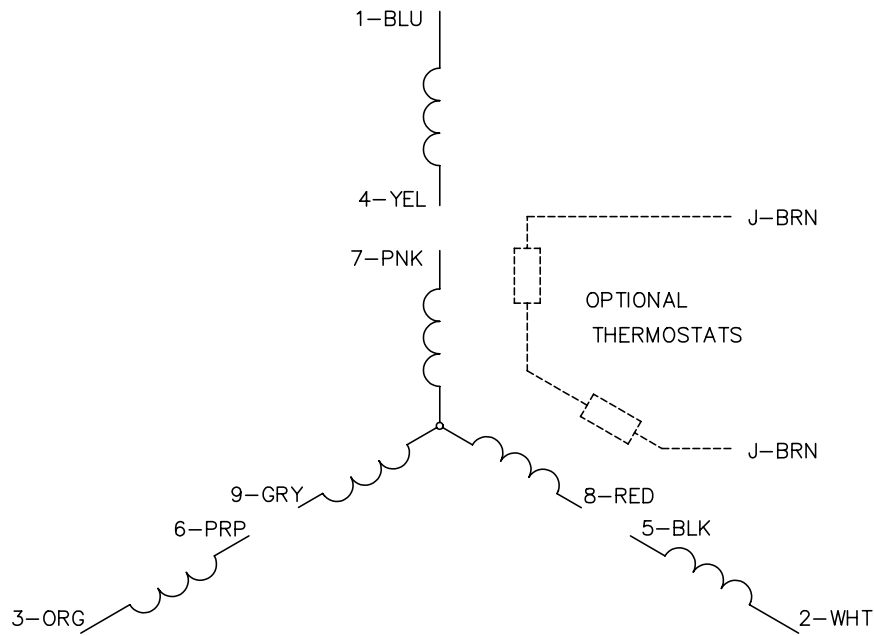
% of Rated Load	25	50	75	100	125	150	S.F.
<b>Power Factor:</b>	31.0	46.0	57.0	66.0	72.0	76.0	0.0
<b>Efficiency:</b>	57.8	70.5	76.0	77.3	78.6	76.5	0.0
<b>Speed:</b>	1786.0	1773.0	1760.0	1747.0	1734.0	1716.0	0.0
<b>Line Amperes:</b>	1.35	1.47	1.63	1.84	2.06	2.38	0.0

Performance Graph at 460V, 60Hz, 1.0HP Typical performance - Not guaranteed values

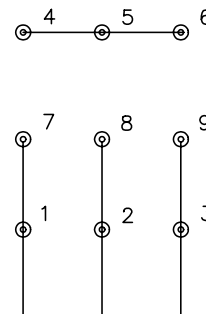




CD0005

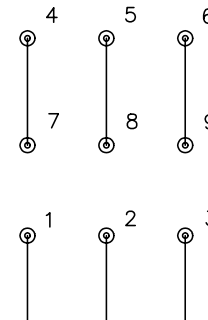


LOW VOLTAGE  
(2Y)



LINE

HIGH VOLTAGE  
(1Y)



LINE

NOTES:

1. INTERCHANGE ANY TWO LINE LEADS TO REVERSE ROTATION.
2. OPTIONAL THERMOSTATS ARE PROVIDED WHEN SPECIFIED.
3. ACTUAL NUMBER OF INTERNAL PARALLEL CIRCUITS MAY BE A MULTIPLE OF THOSE SHOWN ABOVE.
4. LEAD COLORS ARE OPTIONAL. LEADS MUST ALWAYS BE NUMBERED AS SHOWN.

REV. DESC: REVISE TO SHOW OPTIONAL COLORS			
REV. LTR: E	BY: JLP	REVISED: 01/19/99 10:15	TDR: 0171435
900003		FILE: AAA00005140	MDL: -
		MTL: -	

**BALDOR ELECTRIC Co.**

3PH, DV, 9 LEADS

CD0005