

BALDOR® • ***RELIANCE***

Product Information Packet

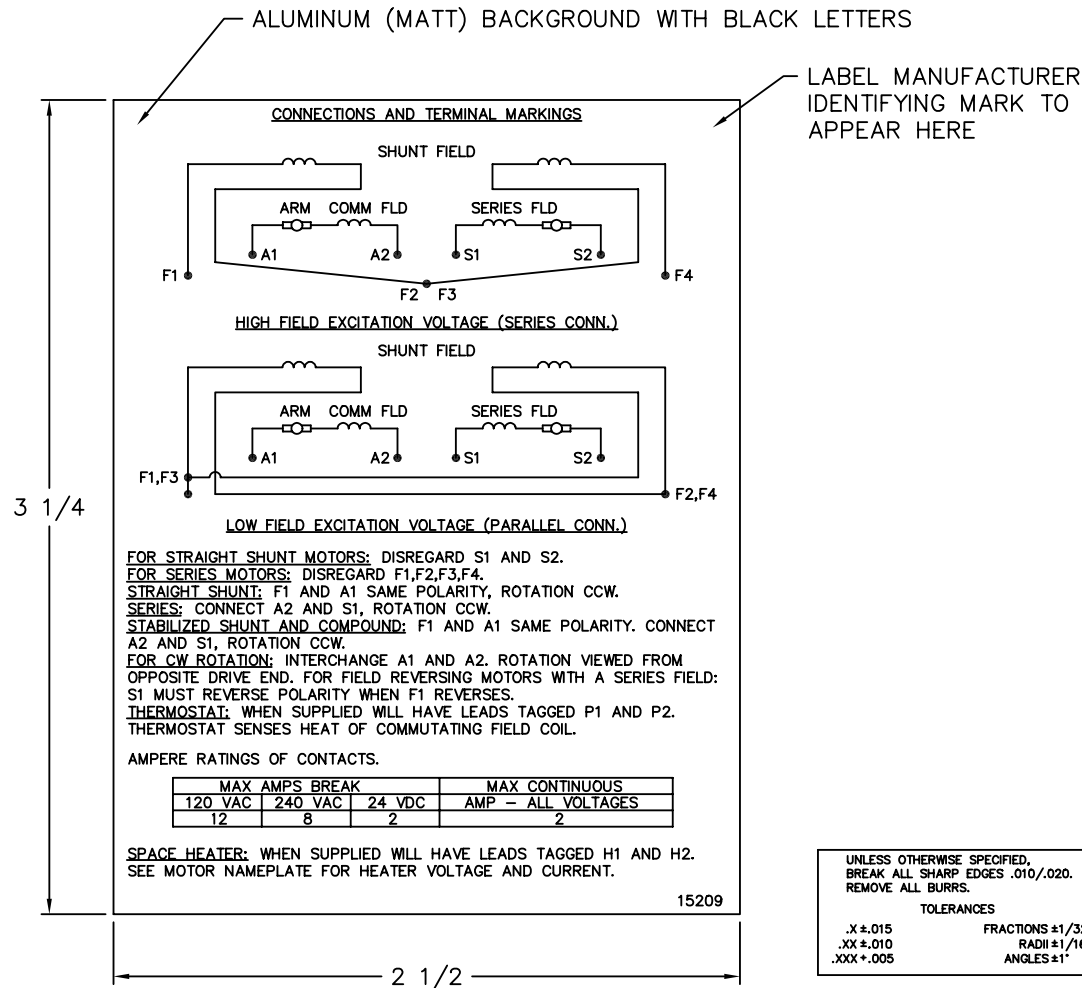
ELECTRIC MOTOR WHOLESAL.COM

D50400P-BV

400HP, 1750/1900RPM, DC, 508AT, DPBV, F1, N

Part Detail			
Type:	DC	Prod. Type:	TR
Power Code:	D	Weight:	3285
Frame Group:	0508AT	Mounting Pos.:	F1
HP:	400	Enclosure:	DPFG
RPM:	1750/1950	Wound:	STR. SHUNT
Service Factor:	1.0	Arm V:	500
Arm A:	624.00	Field V:	150/ 300
Field A:	17.76/8.88	Field A Hot:	12.14-9.52/6.07
Insulation Class:	F	Ambient:	40
Duty:	CONT	DE Bearing:	6218
ODE Bearing:	6216	Brushes:	50034-2
Brush Qty.:			

15209



NOTE:
 MATERIAL .005 MINIMUM FULL HARD ALUMINUM DULL FINISH.
 TEMP. RANGE -20°C TO +125°C MAXIMUM.
 FOR INDOOR AND OUTDOOR MOUNTING BACK.
 METAL, PRESSURE SENSITIVE BACK. MUST MEET CSA STANDARD.
 THE CSA IDENTIFYING MARK OF THE LABEL MANUFACTURER MUST APPEAR IN THE UPPER RIGHT HAND CORNER AS INDICATED.

MATL: NOTED

REV: G CHANGE ALL "NAMEPLATE" TEXT TO "LABEL"

60291

SCALE: - BY: BKW REVISED: 02/19/97
 FILE: CHB00002485 TDR: 0115147

BALDOR ELECTRIC Co.

LABEL, CONNECTIONS AND TERMINAL MARKINGS DC

15209