



A Regal Brand

Catalog # : 191908.00
Product Type: AC MOTOR
Description:

Model: 191908.00
Stock: Y

Quote: Price:

Date: 02/14/2019



A Regal Brand

Catalog # : 191908.00
Product Type: AC MOTOR
Description:

Model: 191908.00
Stock: Y

Engineering Data

| | | | | | |
|-----------|-----|-----------|-----|-----------|--|
| Volts | 115 | Volts | 230 | Volts | |
| F.L. Amps | 2.6 | F.L. Amps | 1.3 | F.L. Amps | |
| S. F Amps | | S. F Amps | | S. F Amps | |

| | | | | | |
|-------------|------|---------------|-----------|-------------|---------|
| RPM | 1625 | Hertz | 60 | TYPE | PN |
| HP | 1/4 | Duty | AIROVER | Phase | 1 |
| KW | .187 | Serv. Factor | 1.0 | Code | B |
| Frame | 48Y | Design | N | Therm.Prot. | MEG65RX |
| Max Amb | 40 | Protection | AUTOMATIC | PF | 88.2 |
| Insul Class | B | Eff 75% | | Bearing OPE | |
| Eff 100% | 64 | CSA | Yes | Bearing PE | |
| UL | Yes | CE | No | Speed Range | NONE |
| CC Number | | Inverter Type | | | |
| Load Type | | | | | |

| | | | | | |
|--------------|-------|-----------------|---------|-------------|---------------|
| Motor Wt. | 15 LB | Enclosure | TENV | Lubrication | POLYREX EM |
| Nameplate | | Mounting | SPECIAL | Rotation | SELECTIVE CCW |
| Assembly | | Shaft Dia. | 5/8 IN | Ext. Diag. | 005109.01 |
| Cust Part No | | Outline | 169845 | Ext. Diag2 | |
| Packaging | | Outline Dash No | | Winding | QP5543 |
| Carton Label | | Paint | N/A | GROUP : | 3 |
| Iris | | | | Test Card | |

| | | | | | |
|-------------|--|-----------|--|--------------|-------------|
| Form Factor | | RMS Amps | | Const Torque | Speed Range |
| Torque | | Peak | | | |
| AB Code | | Peak@DegC | | | |
| Resistance | | | | | |
| Connection | | | | | |

| | |
|---------------|-------------|
| Rework Status | Rework TYPE |
|---------------|-------------|

Hazardous Loc
Explosion Proof
Class
Class

NONE

Temp Op Code
GROUP
GROUP

Brake Motors
FORCE
VDC
ADC

Brake Coil OHMs @25 C

| | | | | | |
|----------------|-----------------|--|----------------------------|-----------------------|-------------------|
| Performance | | | | | |
| Torque UOM | OZ-FT | | Inertia (WK ²) | -1 LB-FT ² | |
| Torque | 12.7(Full Load) | | 20(Break Down) | 9.7(Pull Up) | 9.8(Locked Rotor) |
| CURRENT (amps) | 1.3(Full Load) | | 0(Break Down) | 0(Pull Up) | 3.7(Locked Rotor) |
| Efficiency (%) | 0(Full Load) | | 63.3(75% Load) | 56.1(50% Load) | 39.1(25% Load) |
| PowerFactor | 0(Full Load) | | 81.9(75% Load) | 76.1(50% Load) | 62.5(25% Load) |

Load Curve Data @60 HzVolts, 1/4Horsepower

| Load | Amps | KW | RPM | Torque | Eff | PF | Rise By Resis | Frame Rise |
|------|------|-------|------|--------|------|------|---------------|------------|
| 0.0 | 0.82 | 0.083 | 1790 | 0.0 | 0.0 | 44.0 | 0.0 | - |
| 0.25 | 0.89 | 0.128 | 1762 | 3.2 | 39.1 | 62.5 | 0.0 | - |
| 0.5 | 1.0 | 0.175 | 1729 | 6.4 | 56.1 | 76.1 | 0.0 | - |
| 0.75 | 1.2 | 0.226 | 1689 | 9.54 | 63.3 | 81.9 | 0.0 | - |
| 1.0 | 1.4 | 0.284 | 1640 | 12.7 | 65.1 | 88.2 | 0.0 | - |
| 1.25 | 1.7 | 0.353 | 1571 | 15.85 | 62.6 | 90.3 | 0.0 | - |
| 1.5 | 2.2 | 0.456 | 1427 | 19.0 | 52.8 | 90.1 | 0.0 | - |

SOURCE: CALCULATED GROUP: 3

Load Curve Data @60HzVolts, 1/4Horsepower

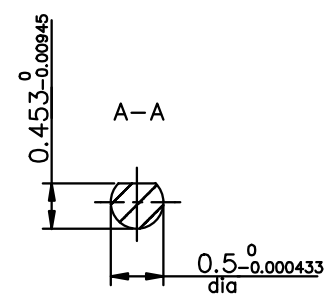
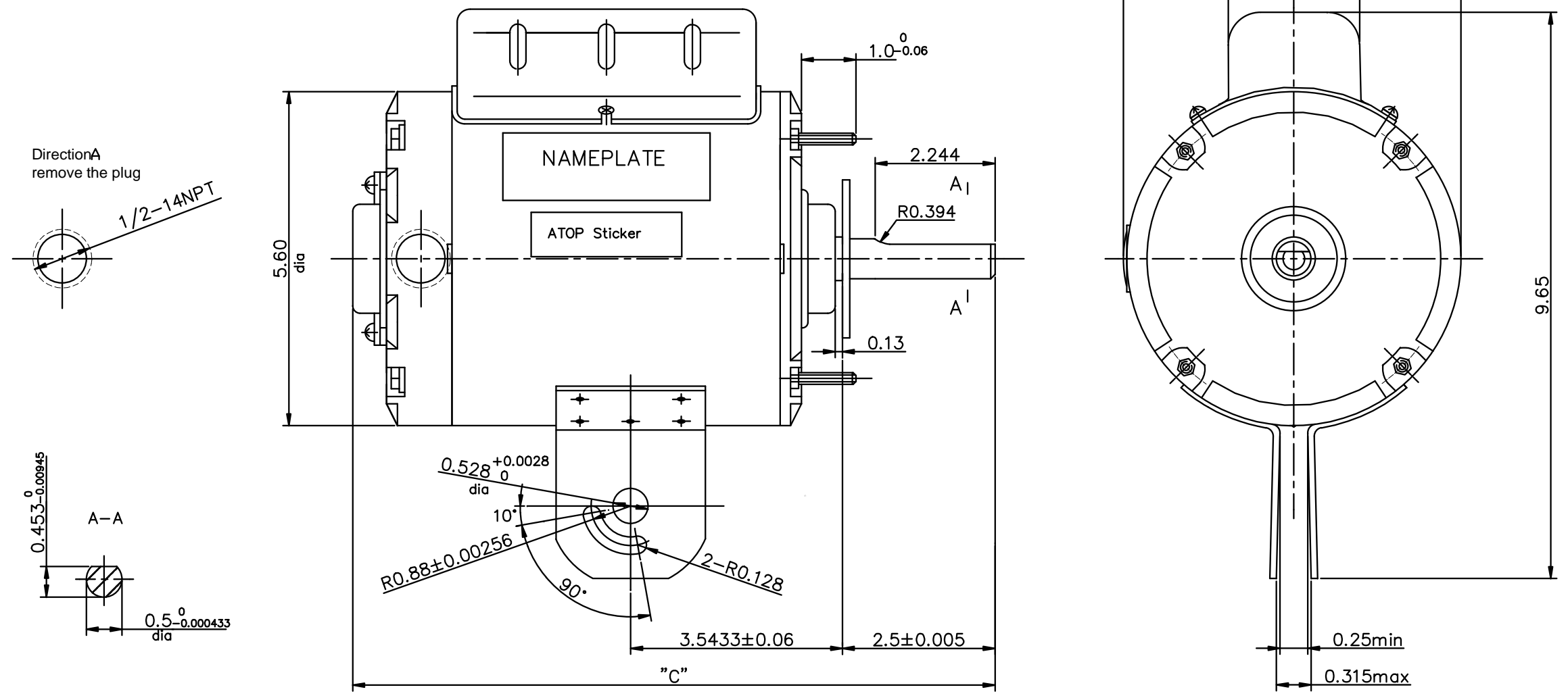
| Load | Amps | KW | RPM | Torque | Eff | PF | Rise By Resis | Frame Rise |
|------|------|----|-----|--------|-----|----|---------------|------------|
|------|------|----|-----|--------|-----|----|---------------|------------|

Load Curve Data Not Available

Quote: Price:

Date: 02/14/2019

169845

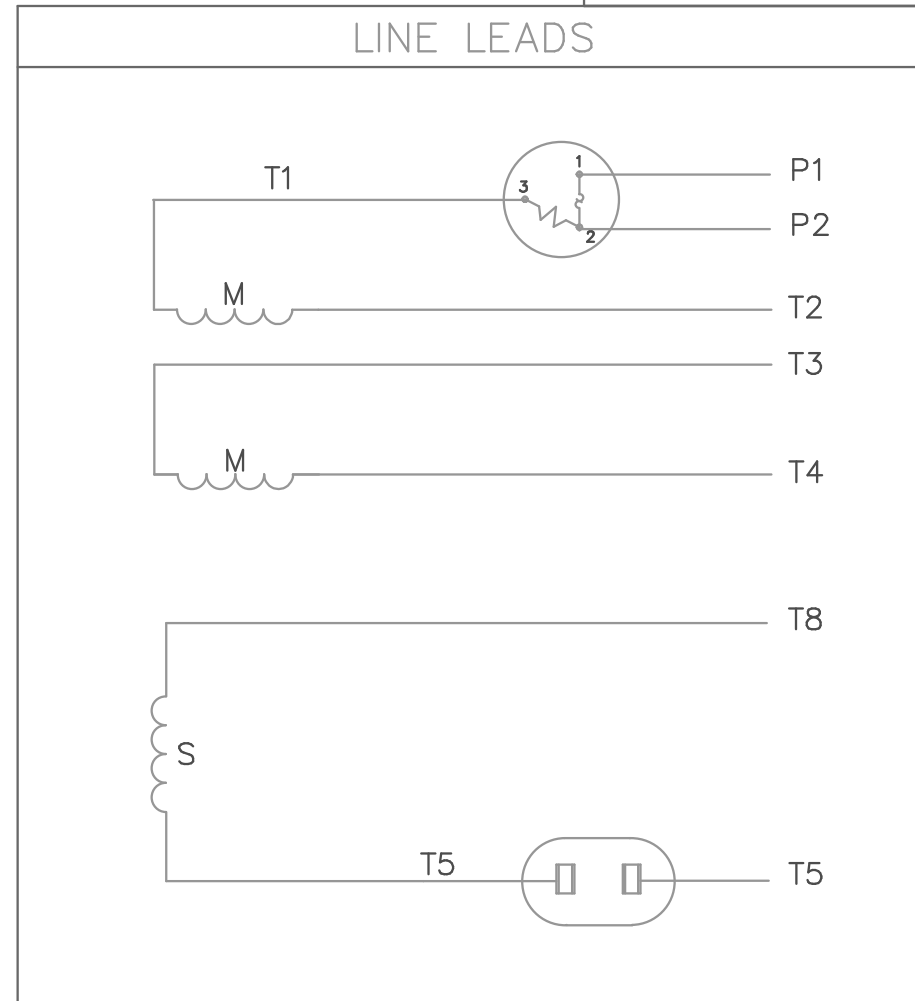
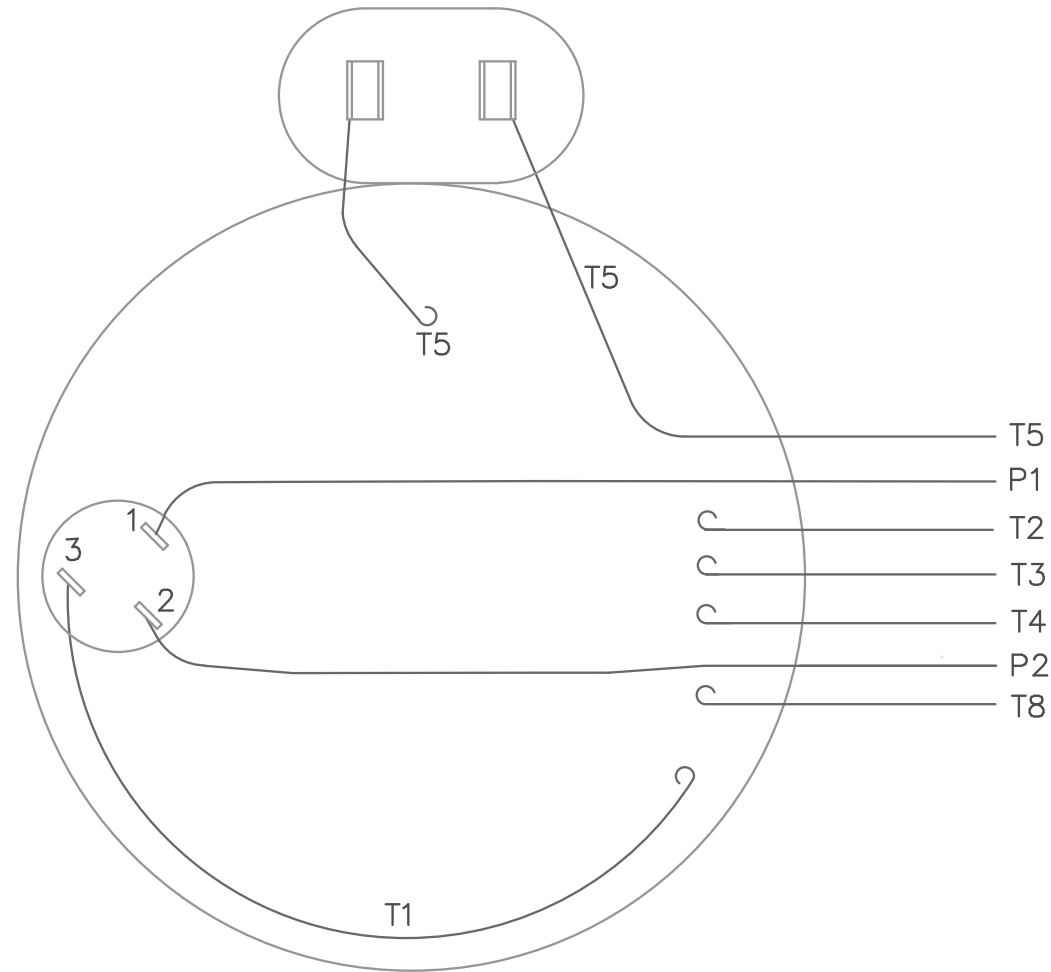


| | |
|------|-------|
| DASH | C |
| 550 | 10.95 |
| | |
| | |

| | | | | | | | | | |
|--|---|-----------------------------|----------|---------------|---|--------|--------------|-------------|------|
| | | TOLERANCES UNLESS SPECIFIED | | LEESON | ELECTRIC MOTORS GEARMOTORS AND DRIVES | DRAWN | BJB 02/18/02 | | |
| | | DEC. | INCHES | | | CHK | | | |
| | | .X | ±.1 | | | APPD | | | |
| | | .XX | ±.03 | TITLE | OUTLINE | SCALE | 3=64 | | |
| | | .XXX | ±.005 | | | REF | | | |
| 01 | ADDED 1/2-14NPT TO PRINT TO MATCH MOTOR | BJB | 02/10/03 | .XXXX | ±.0005 | MAT'L | FMF | | |
| NO. | REVISION | BY & DATE | CHK | ANG | ±1/2' | FINISH | PREV | | |
| THIS DRAWING IN DESIGN AND DETAIL IS OUR PROPERTY AND MUST NOT BE USED EXCEPT IN CONNECTION WITH OUR WORK ALL RIGHTS OF DESIGN AND INVENTION ARE RESERVED THIS IS AN ELECTRONICALLY GENERATED DOCUMENT - DO NOT SCALE THIS PRINT | | | | RFP | CAD FILE | 169845 | SIZE | DRAWING NO. | REV. |
| | | | | DIST | | | B | 169845 | 01 |

005109-01

VIEW FROM OUTSIDE OF MOTOR AT SWITCH END.



| | ROTATION FACING LEAD END | L1 | L2 | JOIN | INSULATE SEPARATELY |
|-----------|--------------------------|----|--------------|--------------|---------------------|
| HIGH VOLT | C.C.W. | P1 | T4 T5 | T2, T3 T8 | P2 |
| | C.W. | P1 | T4 T8 | T2, T3 T5 | P2 |
| LOW VOLT | C.C.W. | P1 | T2, T4 T5 | P2, T3 T8 | -- |
| | C.W. | P1 | T2, T4 T8 | P2, T3 T5 | -- |

TOLERANCES UNLESS OTHERWISE SPECIFIED

| DEC. | INCHES | METRIC |
|-------|--------|--------|
| .X | ± | ± |
| .XX | ± | ± |
| .XXX | ± | ± |
| .XXXX | ± | ± |

| | |
|-----------|---|
| FRACTIONS | ± |
| ANGLES | ± |

LEESON ELECTRIC CORPORATION

DRAWN JRW 10/01/75

APPR. JBM 10/02/75

R.F.P.

SCALE 1=1

REF. 005003

FMF W-P5567

TITLE EXTERNAL WIRING DIAGRAM
TYPE "P" W/PROTECTOR

MAT'L. DECAL - 004011 BRF

FINISH

REV. 08

DRAWING NO. 005109-01

| NO. | REVISION | BY & DATE | CH'K'D. |
|-----|----------------|--------------|---------|
| 08 | REDRAWN ON CAD | DBT 05/28/97 | |

THIS DRAWING IN DESIGN AND DETAIL IS OUR PROPERTY AND MUST NOT BE USED EXCEPT IN CONNECTION WITH OUR WORK ALL RIGHTS OF DESIGN AND INVENTION ARE RESERVED THIS IS AN ELECTRONICALLY GENERATED DOCUMENT - DO NOT SCALE THIS PRINT