

# **BALDOR® • RELIANCE**

## **Product Information Packet**

### **VBL3510**

**1HP,1725RPM,1PH,60HZ,56C,BRAKE,3524L**

Product Detail							
Revision:	AE	Status:	PRD/A	Change #:		Proprietary:	No
Type:	AC	Prod Type:	3524L	Elec. Spec:	35WGX945	CD Diagram:	CD0001
Enclosure	TEFC	Mfg Plant:		Mech Spec:	35E057	Layout:	35LYE057
Frame:	56C	Mounting:	F1	Poles:	04	Created Date:	
Base:	N	Rotation:	R	Insulation:	B	Eff. Date:	04-25-2007
Leads:	6#18					Replaced By:	
Nameplate NP1256L							
CAT.NO.	VBL3510						
SPEC.	35E57X945-B						
HP	1						
VOLTS	115/230						
AMP	12.8/6.4						
RPM	1725						
FRAME	56C	HZ	60	PH	1		
SER.F.	1.15	CODE	K	DES	L	CLASS	B
NEMA-NOM-EFF	67	PF	73				
RATING	40C AMB-CONT						
CC		USABLE AT 208V	7				
DE	6205	ODE	6203				
ENCL	TEFC	SN					

<b>Parts List</b>			
<b>Product ID</b>	<b>Description</b>	<b>Quantity</b>	<b>List Price</b>
SA024346	SA 35E57X945-B	1.000	637.00
RA020396	RA 35E57X945-B	1.000	445.00
EC1645A06SP	ELEC CAP, 645-774 MFD, 125V, 2.06D X 4.	1.000	31.00
NS2512A01	INSULATOR, CONDUIT BOX X X	1.000	2.00
35CB3007	35 CB CASTING W/.88 DIA. LEAD HOLE	1.000	27.00
36GS1000SP	GASKET-CONDUIT BOX, .06 THICK #SV-330 LE	1.000	5.00
51XB1016A07	10-16 X 7/16 HXWSSLD SERTYB	2.000	2.00
11XW1032G06	10-32 X .38, TAPTITE II, HEX WSHR SLTD U	1.000	2.00
35EP3900T25	FR EP FACE MNT ENCL FOR BRAKE	1.000	51.00
51XW0832A07	8-32 X .44, TAPTITE II, HEX WSHR SLTD SE	2.000	2.00
NS2501A01	INSULATOR, CAPACITOR X	1.000	2.00
51XB1016A05	10-16X5/16HX WA SL SR TYB (F/S)	2.000	2.00
HW5100A03SP	WAVY WASHER (W1543-017)	1.000	2.00
35EP3300A33	SPL FACE MTD EP -ENCL-205 BRG	1.000	80.00
51XN1032A20	10-32 X 1 1/4 HX WS SL SR	2.000	2.00
HA1014A02SP	SPL SPACER FOR FAN COVER MTD ON BRAKE	3.000	13.00
51XB1016A07	10-16 X 7/16 HXWSSLD SERTYB	3.000	2.00
BR1003A01	BRAKE RELEASE LEVER, 1 1/8 X1 5/16 SS ST	1.000	6.00
HW2501D08	KEY, 3/16 SQ X .875 AUTO	1.000	2.00
35FN3002A01SP	EXT. FAN, PLASTIC, FOR .639/.637 JOURNAL	1.000	25.00
51XB1214A16	12-14X1.00 HXWSSLD SERTYB	1.000	2.00
35FH5000A08SP	FAN COVER ASSY FOR BRAKE MTRS,W/ AUTOPHE	1.000	46.00
51XW1032A06	10-32 X .38, TAPTITE II, HEX WSHR SLTD S	3.000	3.00
35CB4510	35 CB LID	1.000	2.00

<b>Parts List (continued)</b>			
<b>Product ID</b>	<b>Description</b>	<b>Quantity</b>	<b>List Price</b>
35GS1030	35 GS FOR CB LID - LEXIDE	1.000	2.00
51XW0832A07	8-32 X .44, TAPTITE II, HEX WSHR SLTD SE	4.000	2.00
HW2501D13SP	KEY, 3/16 SQ X 1.375	1.000	2.00
HA7000A04	KEY RETAINER 0.625 DIA SHAFTS	1.000	2.00
10XF0440S02	04-40 X 1/8 TYPE F HEX HD STAINLESS STIC	2.000	2.00
MJ1000A02	GREASE, POLYREX EM EXXON	0.050	10.00
MG1000G27	PAINT- S9282E CHARCOAL GREY	0.017	4,000.00
HA3100A15	THRUBOLT 10-32 X 8.375	4.000	2.00
WD1000A15	3-520132-2 AMP FLAG (4M/RL NON-CANC/NON-	2.000	2.00
35CB4802A02SP	CAPACITOR COVER, STAMPED X W/AUTOPHORET	1.000	16.00
35GS3001A02	GASKET, CA.COVER, 5.38 LONG .06 CS301	1.000	4.00
SP5055A67	MODEL 35 TYPE L STATIONARY SWITCH LEAD A	1.000	24.00
76BK2100BPF	1-056-021-00-BPF BRAKE TDR# 79345	1.000	553.00
84XN3816J28	HEX SOC HD, 3/8-16 X 1.75 LONG	2.000	2.00
LB1125C01	STD (STOCK) CARTON LABEL BALDOR WITH FLA	1.000	2.00
LB1185	LABEL,BRAKE CONNECTION (ON ROLLS)	1.000	2.00
LC0001A01	CONN LABEL / WARNING LABEL (LC0001 / LB1	1.000	2.00
NP1256L	NP STD LASER ENGRAVED, UL CSA CC, W/O TH	1.000	3.00
G7PA1000	PACKAGING GROUP / BALDOR	1.000	21.00
PK3082	STYROFOAB CRADLE	1.000	2.00

**Performance Data at 230V, 60Hz, 1.0HP (Typical performance - Not guaranteed values)**
**General Characteristics**

<b>Full Load Torque:</b>	3.0 LB-FT	<b>Start Configuration:</b>	DOL
<b>No-Load Current:</b>	4.1 Amps	<b>Break-Down Torque:</b>	6.9 LB-FT
<b>Line-line Res. @ 25°C.:</b>	2.6 Ohms A Ph / 1.8 Ohms B Ph	<b>Pull-Up Torque:</b>	5.9 LB-FT
<b>Temp. Rise @ Rated Load:</b>	79°C	<b>Locked-Rotor Torque:</b>	10.0 LB-FT
<b>Temp. Rise @ S.F. Load:</b>	96°C	<b>Starting Current:</b>	39.0 Amps

**Load Characteristics**

<b>% of Rated Load:</b>	<b>25</b>	<b>50</b>	<b>75</b>	<b>100</b>	<b>125</b>	<b>150</b>	<b>S.F.</b>
<b>Power Factor:</b>	39.0	53.0	67.0	75.0	81.0	84.0	79.0
<b>Efficiency:</b>	52.9	67.6	70.0	70.3	68.6	64.9	69.3
<b>Speed:</b>	1781.0	1765.0	1746.0	1726.0	1701.0	1666.0	1711.0
<b>Line Amperes:</b>	4.3	4.7	5.3	6.2	7.4	8.9	6.9

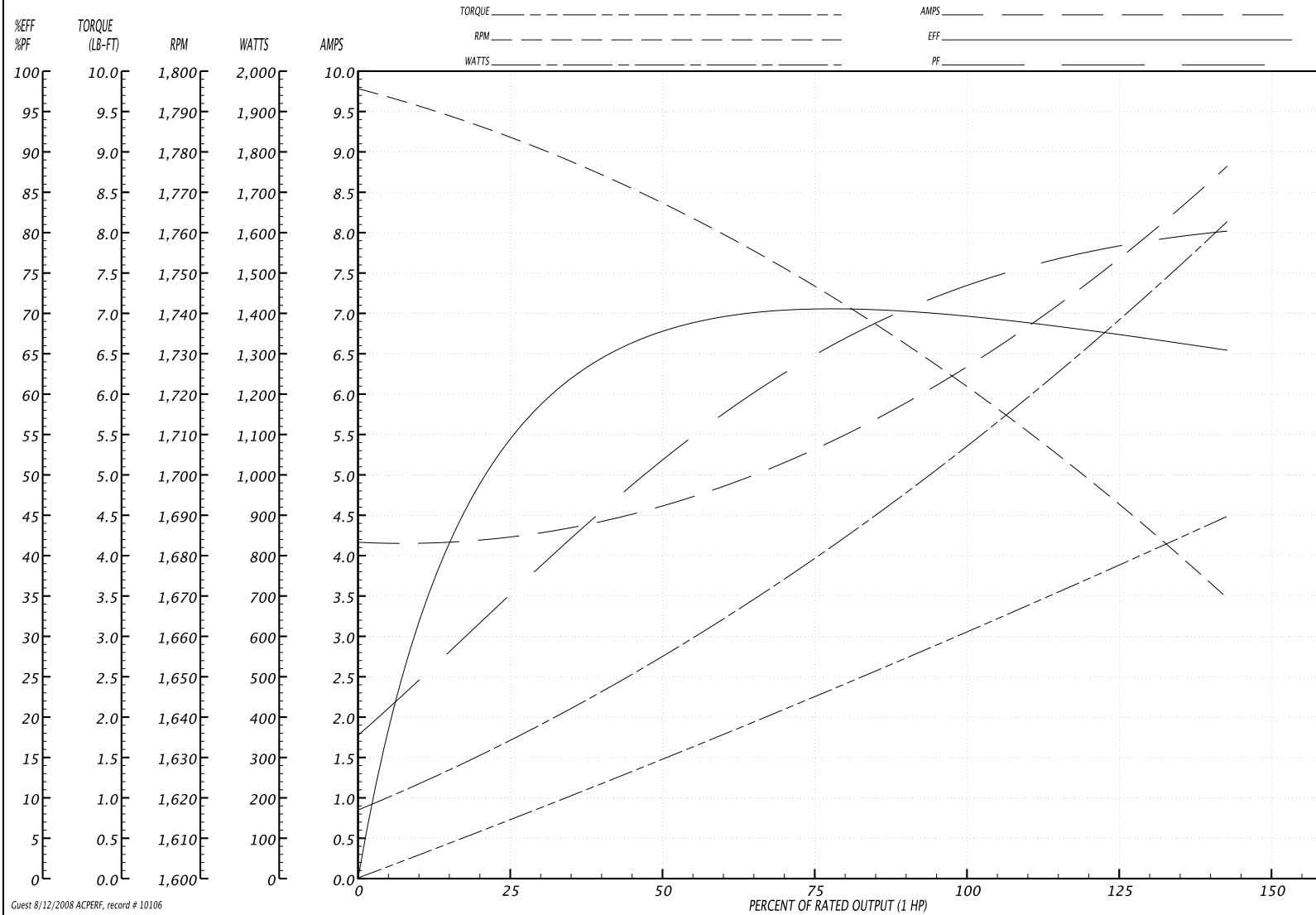
Performance Graph at 230V, 60Hz, 1.0HP (Typical performance - Not guaranteed values)

**BALDOR ELECTRIC COMPANY**

WINDING # 35WG945

Typical performance - not guaranteed values.

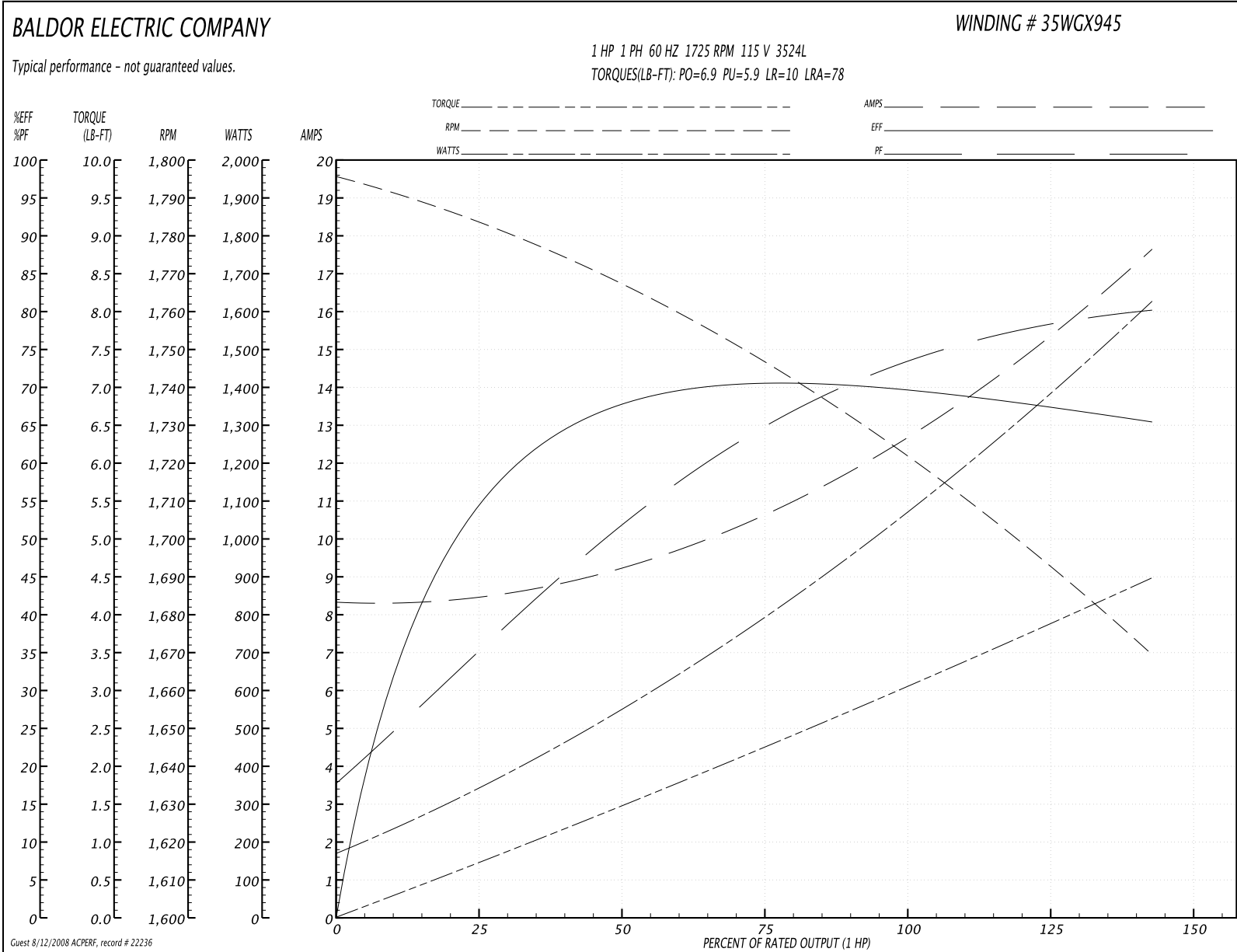
1 HP 1 PH 60 HZ 1725 RPM 230 V 3524L  
 TORQUES(LB-FT): PO=6.9 PU=5.9 LR=10 LRA=39



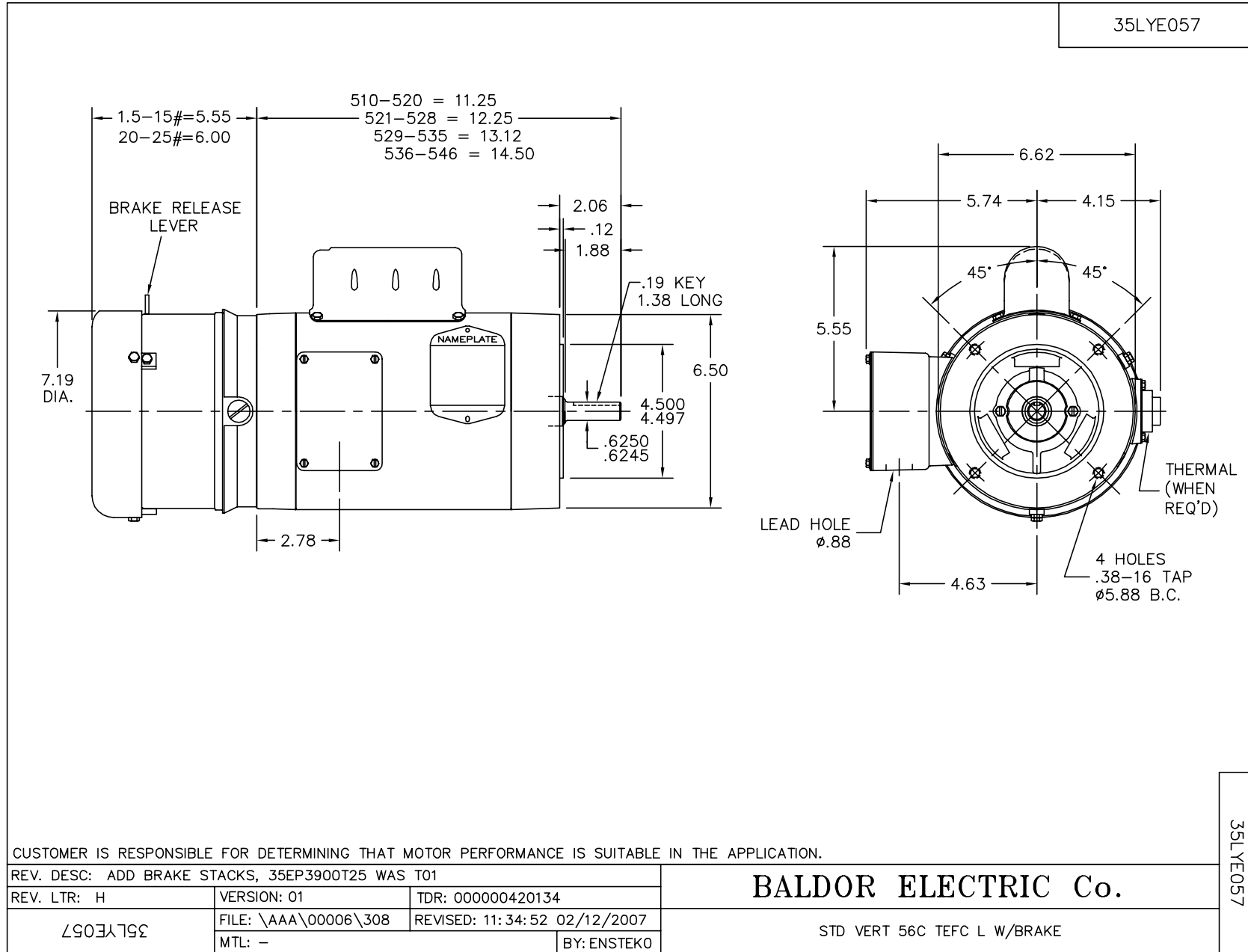
Guest 8/12/2008 ACPERF, record # 10106

Performance Data at 115V, 60Hz, 1.0HP (Typical performance - Not guaranteed values)							
<b>General Characteristics</b>							
<b>Full Load Torque:</b>	3.0 LB-FT			<b>Start Configuration:</b>	DOL		
<b>No-Load Current:</b>	8.2 Amps			<b>Break-Down Torque:</b>	6.9 LB-FT		
<b>Line-line Res. @ 25°C.:</b>	0.65 Ohms A Ph / 1.8 Ohms B Ph			<b>Pull-Up Torque:</b>	5.9 LB-FT		
<b>Temp. Rise @ Rated Load:</b>	79°C			<b>Locked-Rotor Torque:</b>	10.0 LB-FT		
<b>Temp. Rise @ S.F. Load:</b>	96°C			<b>Starting Current:</b>	78.0 Amps		
<b>Load Characteristics</b>							
<b>% of Rated Load:</b>	<b>25</b>	<b>50</b>	<b>75</b>	<b>100</b>	<b>125</b>	<b>150</b>	<b>S.F.</b>
<b>Power Factor:</b>	39.0	53.0	67.0	75.0	81.0	84.0	79.0
<b>Efficiency:</b>	52.9	67.6	70.0	70.3	68.6	64.9	69.3
<b>Speed:</b>	1781.0	1765.0	1746.0	1726.0	1701.0	1666.0	1711.0
<b>Line Amperes:</b>	8.6	9.4	10.6	12.4	14.8	17.8	13.8

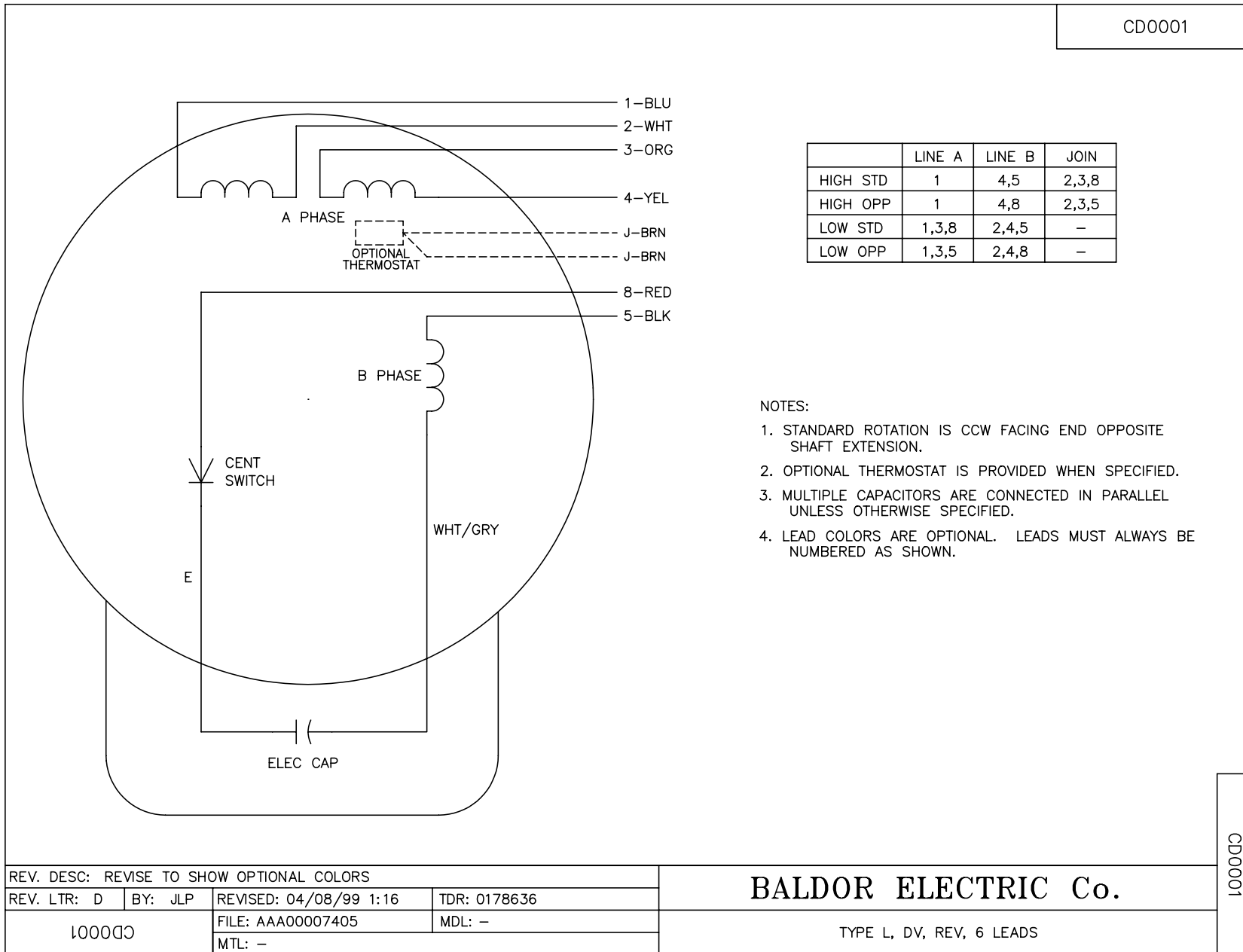
Performance Graph at 115V, 60Hz, 1.0HP (Typical performance - Not guaranteed values)







CD0001



NOTES:

1. STANDARD ROTATION IS CCW FACING END OPPOSITE SHAFT EXTENSION.
2. OPTIONAL THERMOSTAT IS PROVIDED WHEN SPECIFIED.
3. MULTIPLE CAPACITORS ARE CONNECTED IN PARALLEL UNLESS OTHERWISE SPECIFIED.
4. LEAD COLORS ARE OPTIONAL. LEADS MUST ALWAYS BE NUMBERED AS SHOWN.

REV. DESC: REVISE TO SHOW OPTIONAL COLORS			
REV. LTR: D	BY: JLP	REVISED: 04/08/99 1:16	TDR: 0178636
100000		FILE: AAA00007405	MDL: -
		MTL: -	

**BALDOR ELECTRIC Co.**

TYPE L, DV, REV, 6 LEADS

CD0001