



A Regal Brand

Catalog # : E116742.00
Product Type: AC MOTOR
Description:

Model: E116742.00
Stock: Y

Quote: Price:

Date: 08/31/2018

Hazardous Loc
Explosion Proof
Class
Class

NONE

Temp Op Code
GROUP
GROUP

Brake Motors
FORCE
VDC
ADC

Brake Coil OHMs @25 C

Performance					
Torque UOM	LB-FT		Inertia (WK ²)	.162 LB-FT ²	
Torque	6(Full Load)		28.8(Break Down)	24.6(Pull Up)	25.3(Locked Rotor)
CURRENT (amps)	3(Full Load)		19.17(Break Down)	25.37(Pull Up)	26.58(Locked Rotor)
Efficiency (%)	0(Full Load)		85.6(75% Load)	83.4(50% Load)	74.5(25% Load)
PowerFactor	72.1(Full Load)		64(75% Load)	51.9(50% Load)	33.4(25% Load)

Load Curve Data @60/50 HzVolts,2Horsepower

Load	Amps	KW	RPM	Torque	Eff	PF	Rise By Resis	Frame Rise
0.0	1.7	0.096	1800	0.0	0.0	7.1	0.0	-
0.25	1.92	0.511	1787	1.5	74.5	33.4	0.0	-
0.5	2.19	0.906	1774	3.0	83.4	51.9	0.0	-
0.75	2.58	1.316	1763	4.5	85.6	64.0	0.0	-
1.0	3.01	1.726	1751	6.0	86.5	72.0	53.0	-
1.25	3.5	2.156	1732	7.5	85.6	77.3	0.0	-
1.5	4.05	2.592	1717	9.0	84.7	80.3	0.0	-

SOURCE: CALCULATED GROUP: 3

Load Curve Data @60/50HzVolts,2Horsepower

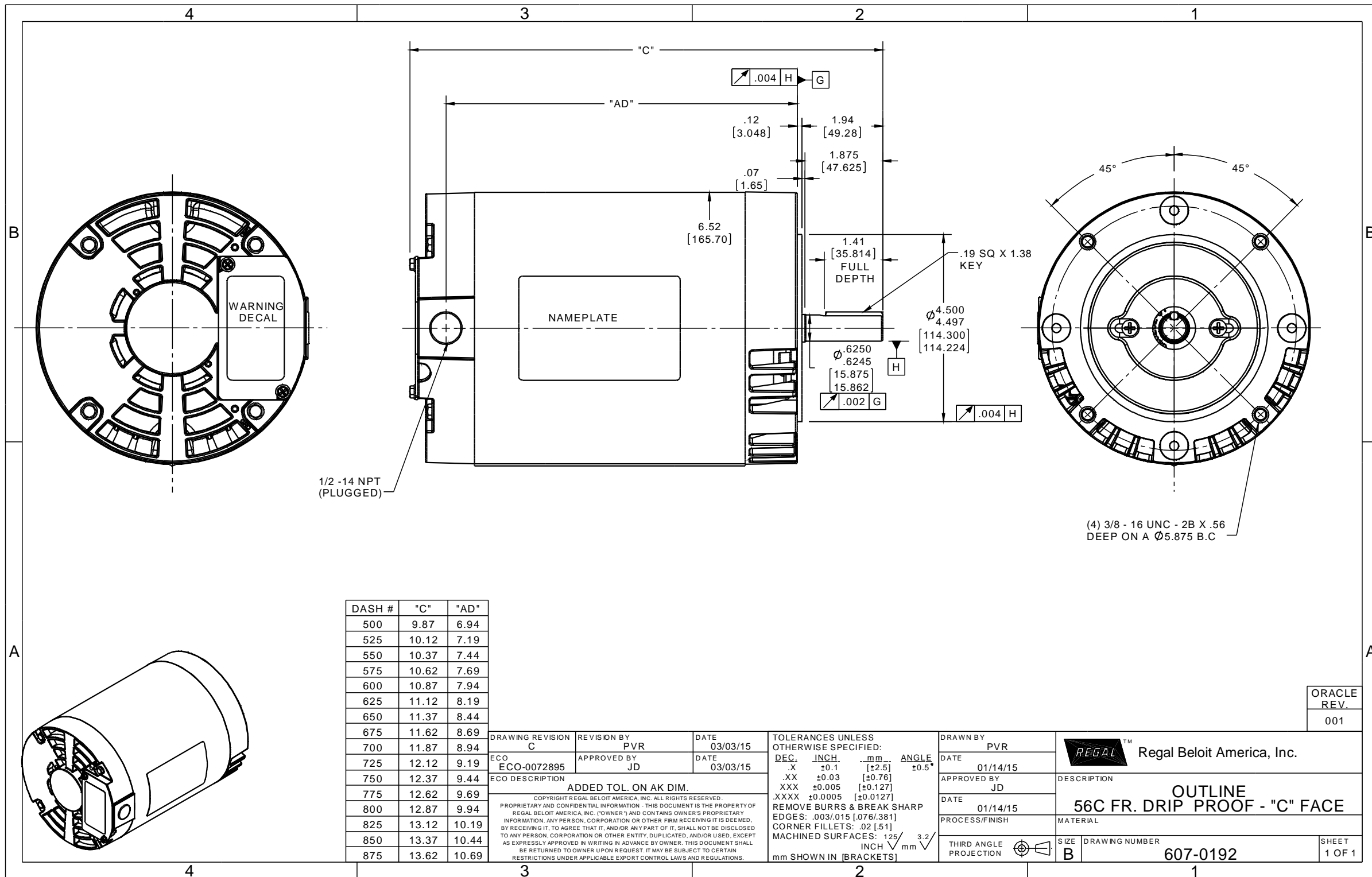
Load	Amps	KW	RPM	Torque	Eff	PF	Rise By Resis	Frame Rise
------	------	----	-----	--------	-----	----	---------------	------------

Load Curve Data Not Available

Quote: Price:

Date: 08/31/2018

Uncontrolled Copy

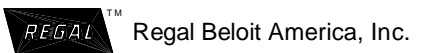


DASH #	"C"	"AD"
500	9.87	6.94
525	10.12	7.19
550	10.37	7.44
575	10.62	7.69
600	10.87	7.94
625	11.12	8.19
650	11.37	8.44
675	11.62	8.69
700	11.87	8.94
725	12.12	9.19
750	12.37	9.44
775	12.62	9.69
800	12.87	9.94
825	13.12	10.19
850	13.37	10.44
875	13.62	10.69

DRAWING REVISION C	REVISION BY PVR	DATE 03/03/15	TOLERANCES UNLESS OTHERWISE SPECIFIED: DEC. INCH mm ANGLE -X ±0.1 [±2.5] ±0.5° .XX ±0.03 [±0.76] .XXX ±0.005 [±0.127] .XXXX ±0.0005 [±0.0127]
ECO ECO-0072895	APPROVED BY JD	DATE 03/03/15	REMOVE BURRS & BREAK SHARP EDGES: .003/.015 [076/381] CORNER FILLETS: .02 [51] MACHINED SURFACES: 125/3.2 INCH mm mm SHOWN IN [BRACKETS]
ECO DESCRIPTION ADDED TOL. ON AK DIM.			

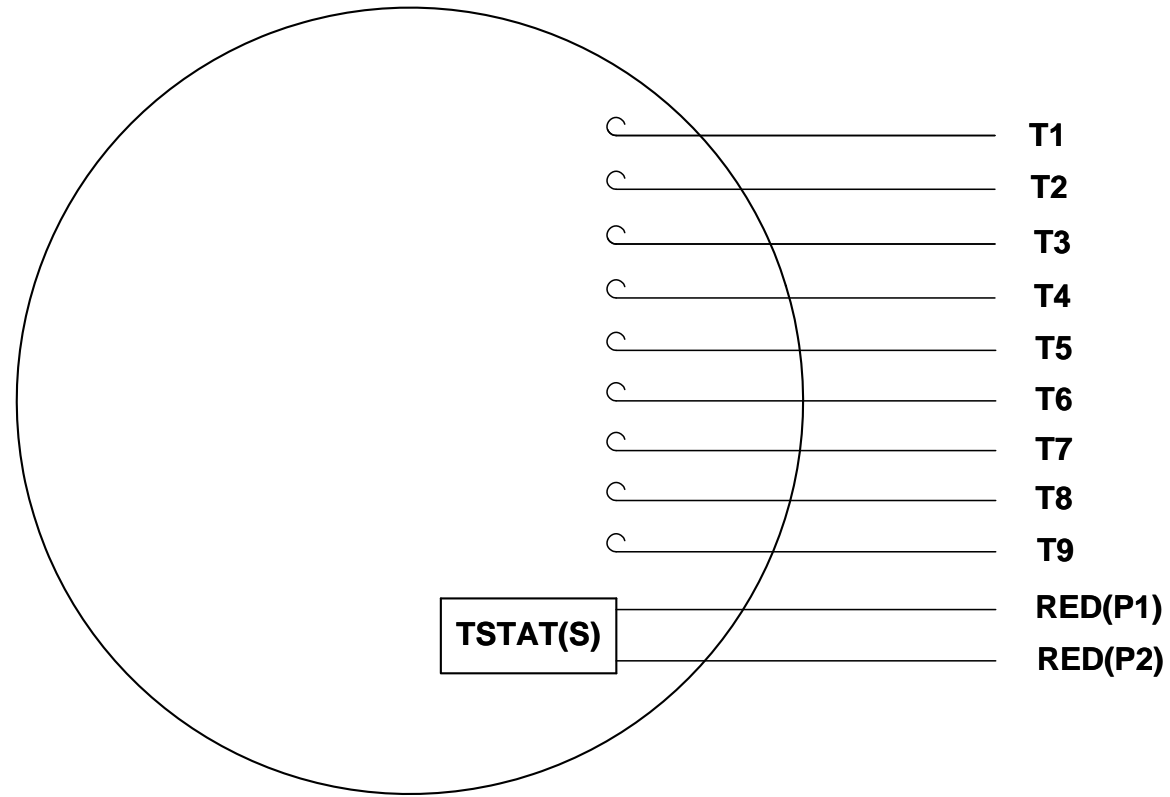
DRAWN BY PVR	DATE 01/14/15	APPROVED BY JD	DATE 01/14/15	PROCESS/FINISH	THIRD ANGLE PROJECTION	SIZE B	DRAWING NUMBER 607-0192	SHEET 1 OF 1
DRAWING NUMBER 607-0192		DESCRIPTION OUTLINE 56C FR. DRIP PROOF - "C" FACE		MATERIAL		ORACLE REV. 001		

COPYRIGHT REGAL BELOIT AMERICA, INC. ALL RIGHTS RESERVED.
PROPRIETARY AND CONFIDENTIAL INFORMATION - THIS DOCUMENT IS THE PROPERTY OF REGAL BELOIT AMERICA, INC. ("OWNER") AND CONTAINS OWNER'S PROPRIETARY INFORMATION. ANY PERSON, CORPORATION OR OTHER FIRM RECEIVING IT IS DEEMED, BY RECEIVING IT, TO AGREE THAT IT, AND/OR ANY PART OF IT, SHALL NOT BE DISCLOSED TO ANY PERSON, CORPORATION OR OTHER ENTITY, DUPLICATED, AND/OR USED, EXCEPT AS EXPRESSLY APPROVED IN WRITING IN ADVANCE BY OWNER. THIS DOCUMENT SHALL BE RETURNED TO OWNER UPON REQUEST. IT MAY BE SUBJECT TO CERTAIN RESTRICTIONS UNDER APPLICABLE EXPORT CONTROL LAWS AND REGULATIONS.

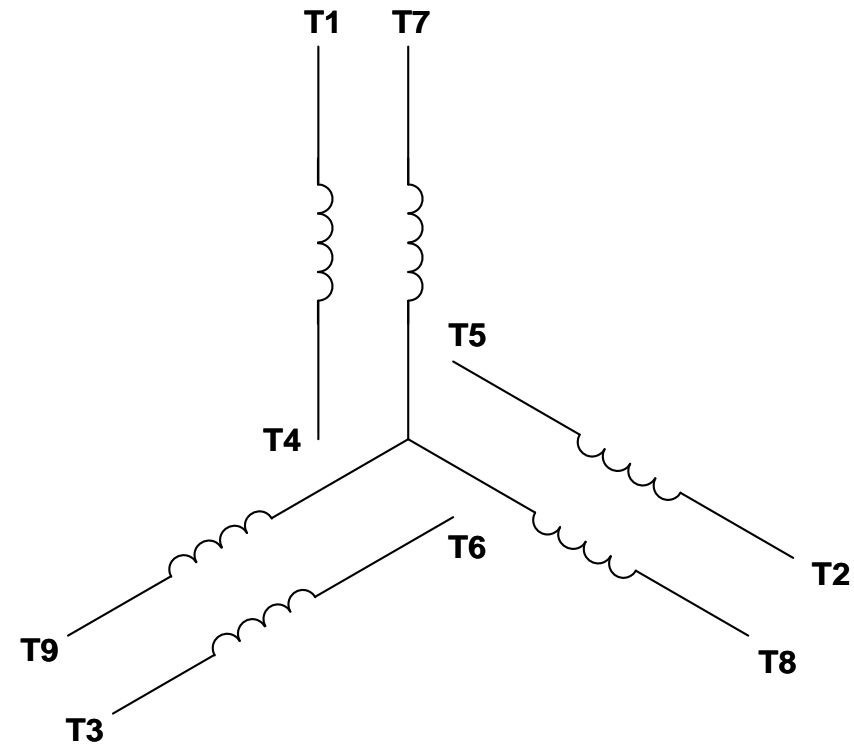


VIEW FROM OUTSIDE OF MOTOR AT SWITCH END.

Uncontrolled Copy



LINE LEADS



VOLTAGE	L1	L2	L3	JOIN & INSULATE
HIGH	T1	T2	T3	(T4,T7) (T5,T8) (T6,T9)
LOW	T1,T7	T2,T8	T3,T9	T4,T5,T6

DRAWING REVISION G	REVISION BY MVG	DATE 04/05/2017
ECO ECO-0121253	APPROVED BY SM	DATE 04/05/2017

ECO DESCRIPTION
ADDED P1 & P2 FOR TSTAT

COPYRIGHT REGAL BELOIT AMERICA, INC. ALL RIGHTS RESERVED. PROPRIETARY AND CONFIDENTIAL INFORMATION - THIS DOCUMENT IS THE PROPERTY OF REGAL BELOIT AMERICA, INC. ("OWNER") AND CONTAINS OWNER'S PROPRIETARY INFORMATION. ANY PERSON, CORPORATION OR OTHER FIRM RECEIVING IT IS DEEMED, BY RECEIVING IT, TO AGREE THAT IT, AND/OR ANY PART OF IT, SHALL NOT BE DISCLOSED TO ANY PERSON, CORPORATION OR OTHER ENTITY, DUPLICATED, AND/OR USED, EXCEPT AS EXPRESSLY APPROVED IN WRITING IN ADVANCE BY OWNER. THIS DOCUMENT SHALL BE RETURNED TO OWNER UPON REQUEST. IT MAY BE SUBJECT TO CERTAIN RESTRICTIONS UNDER APPLICABLE EXPORT CONTROL LAWS AND REGULATIONS.

TOLERANCES UNLESS OTHERWISE SPECIFIED:

DEC.	INCH	mm	ANGLE
.X	±0.1	[±2.5]	±0.5°
.XX	±0.01	[±0.25]	
.XXX	±0.005	[±0.127]	
.XXXX	±0.0005	[±0.0127]	

REMOVE BURRS & BREAK SHARP EDGES: .003/.015 [.076/.381] X 45°
CORNER FILLETS: R.02 [.51]
MACHINED SURFACES: 125/3.2 INCH/mm

mm SHOWN IN [BRACKETS]

DRAWN BY DBT 12/16/97
DATE
APPROVED BY KH 12/17/97
DATE
REFERENCE
THIRD ANGLE PROJECTION

REGAL™ Regal Beloit America, Inc.

DESCRIPTION
CONN DIAGRAM-EXTERNAL
3 PHASE WITH PROTECTOR

MATERIAL DECAL - 004014 (TSTAT) - 080582	PROCESS/FINISH STOCK
SIZE A	DRAWING NUMBER 00501020
SHEET 1 OF 1	