



A Regal Brand

Catalog # : 110047.00
Product Type: AC MOTOR
Description:

Model: 110047.00
Stock: Y

Quote: Price:

Date: 08/22/2018



A Regal Brand

Catalog # : 110047.00
Product Type: AC MOTOR
Description:

Model: 110047.00
Stock: Y

Engineering Data

Volts	208-230	Volts	460	Volts	
F.L. Amps	2.8	F.L. Amps	1.4	F.L. Amps	
S. F Amps	3	S. F Amps	1.5	S. F Amps	

RPM	1800	Hertz	60	TYPE	TF
HP	3/4	Duty	CONTINUOUS		
KW	0.56				
Frame	56C	Serv. Factor	1.15	Phase	3
Max Amb	40	Design	B	Code	K
Insul Class	B	Protection	NOT	Therm.Prot.	
Eff 100%	77	Eff 75%		PF	65
UL	Y-(LEESON UL REC)	CSA	Yes	Bearing OPE	6203
CC Number	EXEMPT	CE	No	Bearing PE	6203
Load Type		Inverter Type		Speed Range	NONE

Motor Wt.	24 LB	Enclosure	TEFC	Lubrication	POLYREX EM
Nameplate	993500	Mounting	ROUND	Rotation	REV
Assembly		Shaft Dia.	5/8 IN	Ext. Diag.	005010.01
Cust Part No		Outline	028776-500	Ext. Diag2	
Packaging	B	Outline Dash No		Winding	T634188
Carton Label	Leeson Gen Purpose			GROUP :	3
Iris		Paint	BLUE - LEESON (ENAMEL)	Test Card	03

Form Factor		RMS Amps		Const Torque	Speed Range
Torque		Peak			
AB Code		Peak@DegC			
Resistance					
Connection					

Rework Status Rework TYPE

Hazardous Loc
Explosion Proof
Class
Class

NONE

Temp Op Code
GROUP
GROUP

Brake Motors
FORCE
VDC
ADC

Brake Coil OHMs @25 C

Performance					
Torque UOM	OZ-FT		Inertia (WK ²)	.06 LB-FT ²	
Torque	36(Full Load)		134(Break Down)	103(Pull Up)	106(Locked Rotor)
CURRENT (amps)	1.4(Full Load)		0(Break Down)	0(Pull Up)	8.1(Locked Rotor)
Efficiency (%)	0(Full Load)		75.6(75% Load)	70.4(50% Load)	54.9(25% Load)
PowerFactor	(Full Load)		54.7(75% Load)	42.5(50% Load)	28.6(25% Load)

Load Curve Data @60 HzVolts,3/4Horsepower

Load	Amps	KW	RPM	Torque	Eff	PF	Rise By Resis	Frame Rise
0.0	1.1	0.114	1798	0.0	0.0	13.0	0.0	-
0.25	1.14	0.26	1787	9.0	54.9	28.6	0.0	-
0.5	1.19	0.403	1774	18.0	70.4	42.5	0.0	-
0.75	1.28	0.558	1760	27.0	75.6	54.7	0.0	-
1.0	1.39	0.721	1746	36.0	77.4	65.1	60.0	21.0
1.25	1.56	0.871	1730	45.0	79.4	70.1	0.0	-
1.5	1.77	1.076	1711	54.0	76.3	76.3	0.0	-

SOURCE: CALCULATED GROUP: 3

Load Curve Data @60HzVolts,3/4Horsepower

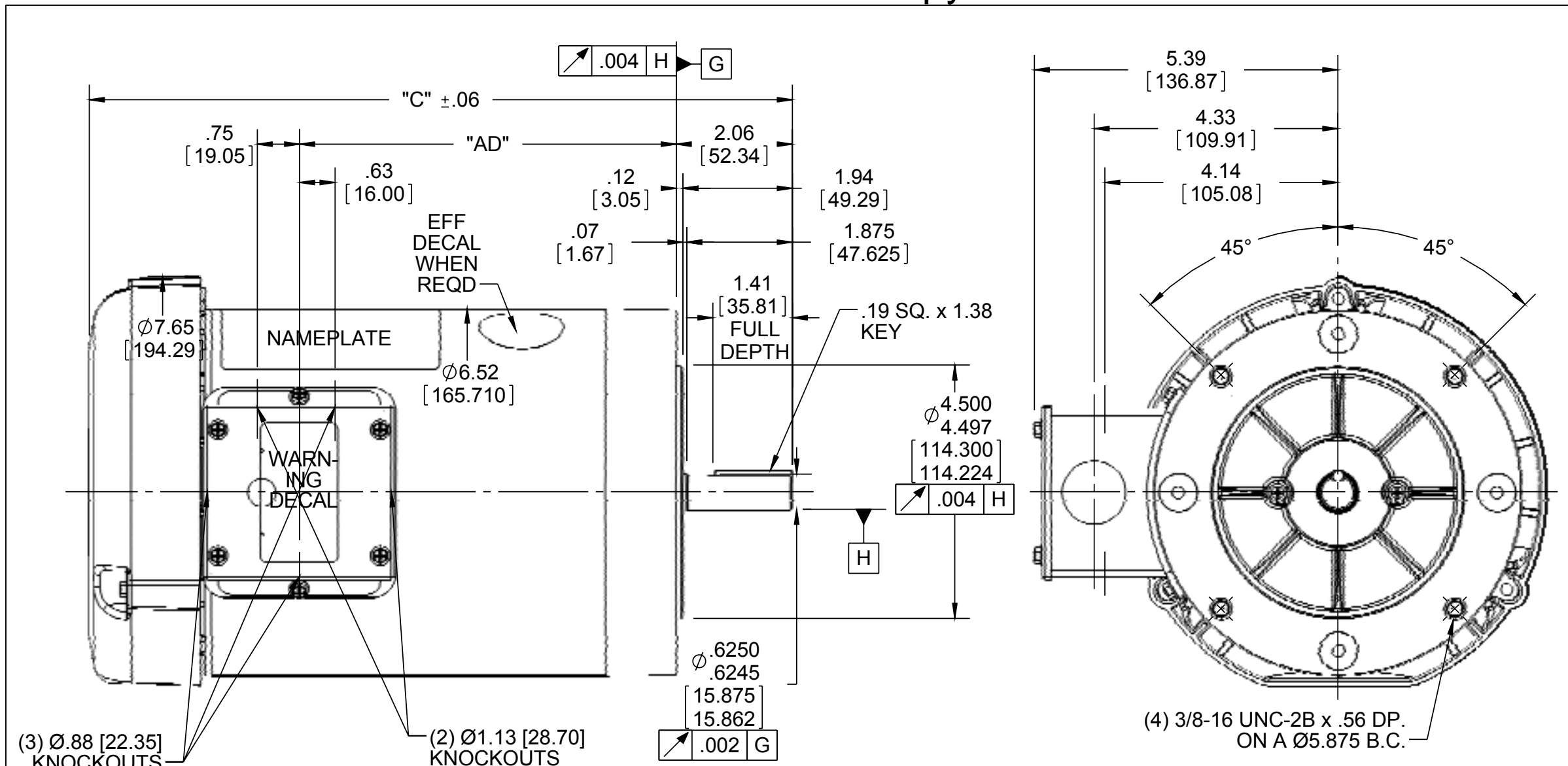
Load	Amps	KW	RPM	Torque	Eff	PF	Rise By Resis	Frame Rise
------	------	----	-----	--------	-----	----	---------------	------------

Load Curve Data Not Available

Quote: Price:

Date: 08/22/2018

Uncontrolled Copy



NOTE:
1) GASKETS THROUGHOUT

ORACLE REV
004

DASH NO.	"C"	"AD"	DASH NO.	"C"	"AD"
450	9.98	4.19	650	11.98	6.19
500	10.48	4.69	675	12.23	6.44
550	10.98	5.19	700	12.48	6.69
600	11.48	5.69	750	12.98	7.19
625	11.73	5.94	800	13.48	7.69

DRAWING REVISION E	REVISION BY STEVE WEBER	DATE 01/19/16
ECO ECO-0092098	APPROVED BY	DATE
ECO DESCRIPTION ADDED #450 (114176)		
<small>COPYRIGHT REGAL BELOIT AMERICA, INC. ALL RIGHTS RESERVED. PROPRIETARY AND CONFIDENTIAL INFORMATION - THIS DOCUMENT IS THE PROPERTY OF REGAL BELOIT AMERICA, INC. ("OWNER") AND CONTAINS OWNER'S PROPRIETARY INFORMATION. ANY PERSON, CORPORATION OR OTHER FIRM RECEIVING IT IS DEEMED, BY RECEIVING IT, TO AGREE THAT IT, AND/OR ANY PART OF IT, SHALL NOT BE DISCLOSED TO ANY PERSON, CORPORATION OR OTHER ENTITY, DUPLICATED, AND/OR USED, EXCEPT AS EXPRESSLY APPROVED IN WRITING IN ADVANCE BY OWNER. THIS DOCUMENT SHALL BE RETURNED TO OWNER UPON REQUEST. IT MAY BE SUBJECT TO CERTAIN RESTRICTIONS UNDER APPLICABLE EXPORT CONTROL LAWS AND REGULATIONS.</small>		

TOLERANCES UNLESS OTHERWISE SPECIFIED:
 DEC. INCH mm ANGLE
 .X ±0.1 [±2.5] ±0.5°
 .XX ±0.01 [±0.25]
 .XXX ±0.005 [±0.127]
 .XXXX ±0.0005 [±0.0127]
 REMOVE BURRS & BREAK SHARP EDGES: .003/.015 [.076/.381] X 45°
 CORNER FILLETS: R.02 [.51]
 MACHINED SURFACES: 125/3.2 INCH/mm
 mm SHOWN IN [BRACKETS]

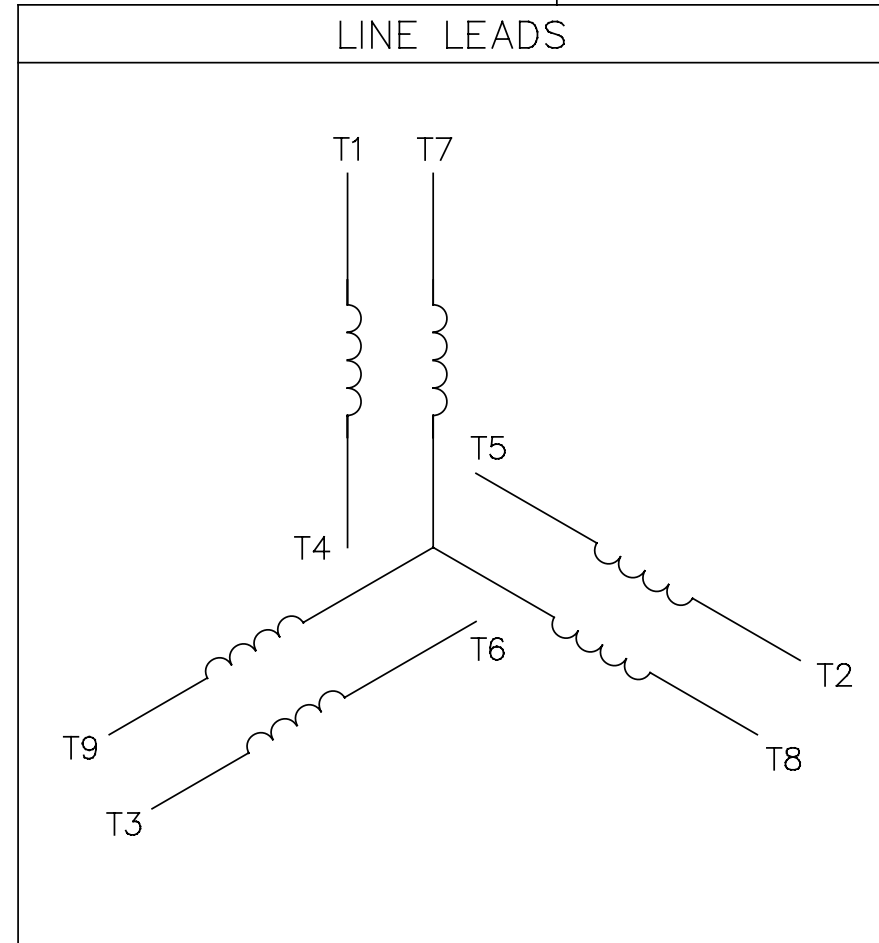
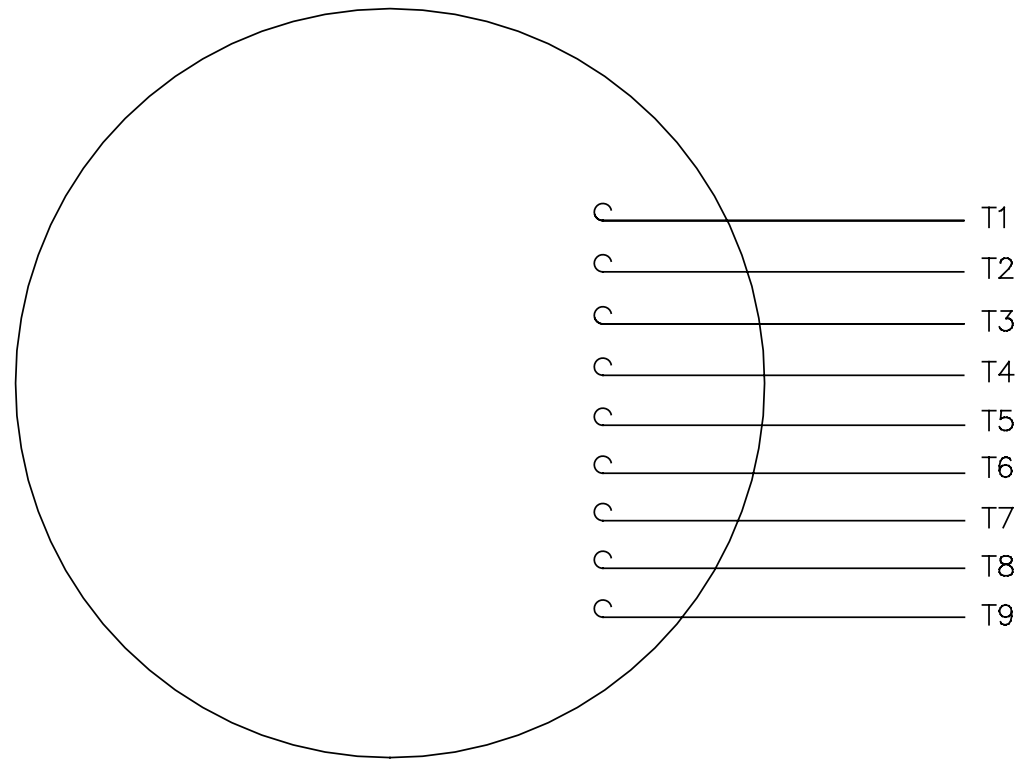
DRAWN BY KMM	DATE 08/01/07
APPROVED BY	DATE
REFERENCE	THIRD ANGLE PROJECTION

Regal Beloit America, Inc.	
DESCRIPTION OUTLINE 56C FRAME TEFC - "C" FACE	
MATERIAL	PROCESS/FINISH GENERAL PURPOSE
SIZE A	DRAWING NUMBER 028776
SHEET 1 OF 1	

Uncontrolled Copy

005010-01

VIEW FROM OUTSIDE OF MOTOR AT SWITCH END.



VOLTAGE	L1	L2	L3	JOIN & INSULATE
HIGH	T1	T2	T3	(T4,T7) (T5,T8) (T6,T9)
LOW	T1,T7	T2,T8	T3,T9	T4,T5,T6

		TOLERANCES UNLESS SPECIFIED		REGAL™ Regal Beloit America, Inc.		DRAWN RDW 04/12/02				
		DEC.	INCHES	TITLE		CHK				
		.X	±.1	EXTERNAL WIRING DIAGRAM		APPD				
		.XX	±.01	3 PHASE W/O PROTECTOR		SCALE 1=1				
		.XXX	±.005	MAT'L. DECAL - 004014		REF FIG.2-51				
A	UPDATED TO REGAL LOGO	SAJ	06/26/15	AJY	.XXXX	±.0005	FMF			
NO.	REVISION	BY & DATE	CHK	ANG	±1/2°	FINISH	PREV			
THIS DRAWING IN DESIGN AND DETAIL IS OUR PROPERTY AND MUST NOT BE USED EXCEPT IN CONNECTION WITH OUR WORK ALL RIGHTS OF DESIGN AND INVENTION ARE RESERVED THIS IS AN ELECTRONICALLY GENERATED DOCUMENT - DO NOT SCALE THIS PRINT				RFP	04/12/02	CAD FILE	00501001	SIZE	DRAWING NO.	REV.
				DIST	BRF-NLV			A	005010-01	A