



A Regal Brand

Catalog # : G150261.22
Product Type: AC MOTOR
Description:

Model: G150261.22
Stock: Y

Quote: Price:

Date: 08/20/2018



A Regal Brand

Catalog # : G150261.22
Product Type: AC MOTOR
Description:

Model: G150261.22
Stock: Y

Engineering Data

Volts	208-230	Volts	460	Volts	
F.L. Amps	40	F.L. Amps	20	F.L. Amps	
S. F Amps	46.0	S. F Amps	23.0	S. F Amps	

RPM	900	Hertz	60	TYPE	TF
HP	15	Duty	CONTINUOUS		
KW	11.2				
Frame	286T	Serv. Factor	1.15	Phase	3
Max Amb	40	Design	B	Code	K
Insul Class	?	Protection	NOT	Therm.Prot.	
Eff 100%	91	Eff 75%		PF	75
UL	Y-(LEESON UL REC)	CSA	Yes	Bearing OPE	6309
CC Number	CC005A	CE	Yes	Bearing PE	6311
Load Type		Inverter Type		Speed Range	NONE

Motor Wt.	480 LB	Enclosure	TEFC	Lubrication	POLYREX EM
Nameplate	004172.01	Mounting	RIGID	Rotation	REV
Assembly		Shaft Dia.		Ext. Diag.	004172.01
Cust Part No		Outline	16953960	Ext. Diag2	
Packaging	B	Outline Dash No		Winding	T14508001
Carton Label				GROUP :	3
Iris		Paint	BLUE (ENAMEL)	Test Card	

Form Factor		RMS Amps		Const TorqueSpeed Range
Torque		Peak		
AB Code		Peak@DegC		
Resistance				
Connection				

Rework Status Rework TYPE

Hazardous Loc
Explosion Proof
Class
Class

NONE

Temp Op Code
GROUP
GROUP

Brake Motors
FORCE
VDC
ADC

Brake Coil OHMs @25 C

Performance					
Torque UOM	LB-FT		Inertia (WK ²)		7.264 LB-FT ²
Torque	93.8(Full Load)		331.1(Break Down)		208(Pull Up)
CURRENT (amps)	20(Full Load)		0(Break Down)		0(Pull Up)
Efficiency (%)	0(Full Load)		90.8(75% Load)		89.2(50% Load)
PowerFactor	(Full Load)		68.2(75% Load)		55.8(50% Load)
					243.9(Locked Rotor)
					151(Locked Rotor)
					84.2(25% Load)
					37.9(25% Load)

Load Curve Data @60 HzVolts,15Horsepower

Load	Amps	KW	RPM	Torque	Eff	PF	Rise By Resis	Frame Rise
0.0	11.0	0.574	900	0.0	0.0	22.0	0.0	-
0.25	11.8	3.528	896	23.11	84.2	37.9	0.0	-
0.5	13.83	6.462	892	45.68	89.2	55.8	0.0	-
0.75	16.6	9.328	888	7.67	90.8	68.2	0.0	-
1.0	20.0	12.37	884	89.98	91.0	75.0	40.2	-
1.25	23.61	15.38	880	112.34	90.0	80.0	0.0	-
1.5	27.63	18.69	875	134.4	89.3	84.0	0.0	-

SOURCE: CALCULATED GROUP: 3

Load Curve Data @60HzVolts,15Horsepower

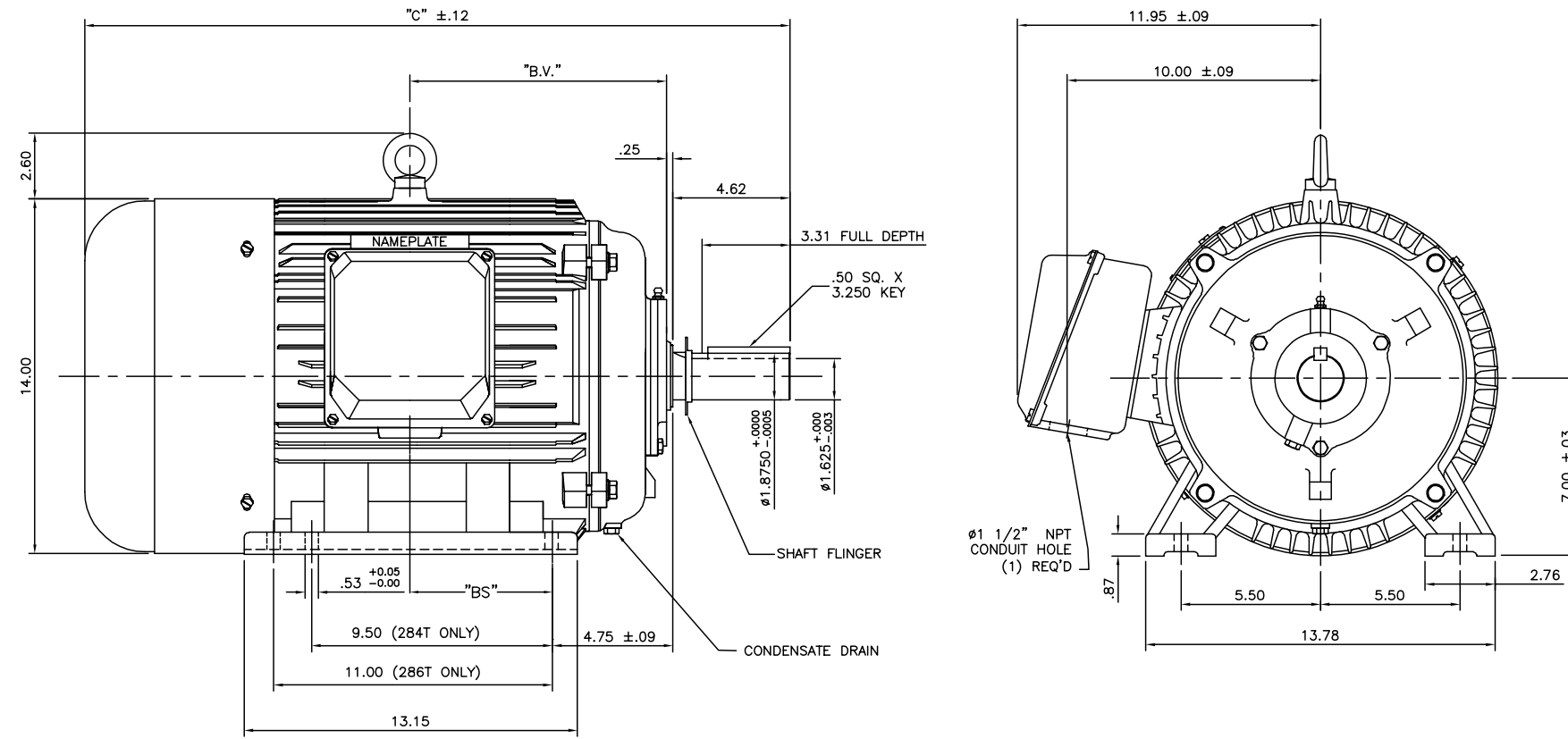
Load	Amps	KW	RPM	Torque	Eff	PF	Rise By Resis	Frame Rise
------	------	----	-----	--------	-----	----	---------------	------------

Load Curve Data Not Available

Quote: Price:

Date: 08/20/2018

169539-60



NOTE: 286T HAS 6 MTG. HOLES, USING 284T AND 286T LOCATIONS

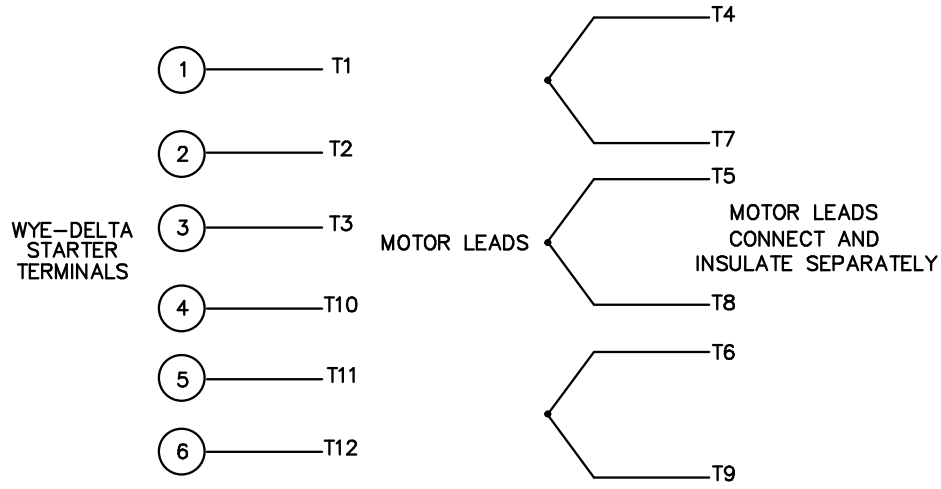
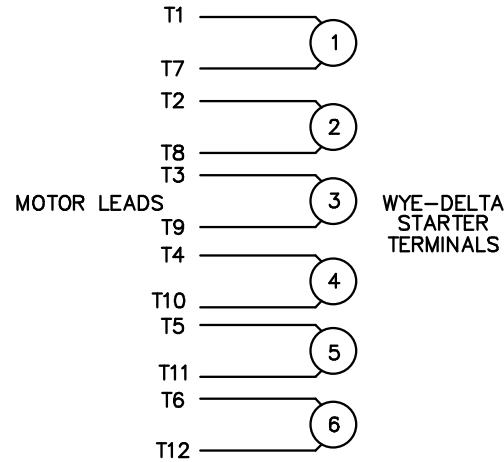
FRAME DESIGN	"C"	"BV"	"BS"
284T	26.26	9.65	
286T	27.83	10.43	5.51

		TOLERANCES UNLESS SPECIFIED		REGAL REGAL-BELOIT CORPORATION		DRAWN CJK 07/16/01	
		DEC.	INCHES			CHK	
03	ECO-0048910, REVISED "BA" DIM.	RFH 04/04/14	EH .XX ±.03	TITLE OUTLINE-280T FRAME, TEFC-RIGID		APPD	
02	REDRAWN TO CURRENT CAD STANDARDS	CJK 07/13/99	.XXX ±.005	NEW CONDUIT BOX		SCALE	N/A
01	ADDED HOLE FOR 286T BASE	JJK 11/01/01	.XXXX ±.0005	MAT'L. CAST IRON		REF	
NO.	REVISION	BY & DATE	CHK ANG ±1/2"	FINISH		FMF	
THIS DRAWING IN DESIGN AND DETAIL IS OUR PROPERTY AND MUST NOT BE USED EXCEPT IN CONNECTION WITH OUR WORK. ALL RIGHTS OF DESIGN AND INVENTION ARE RESERVED. THIS IS AN ELECTRONICALLY GENERATED DOCUMENT -- DO NOT SCALE THIS PRINT.			RFP	CAD FILE	SIZE	DRAWING NO.	PAGE OF
			DIST		A	169539-60	03

WYE - DELTA STARTING USEABLE ON 2,4 AND 6 POLE MOTORS.

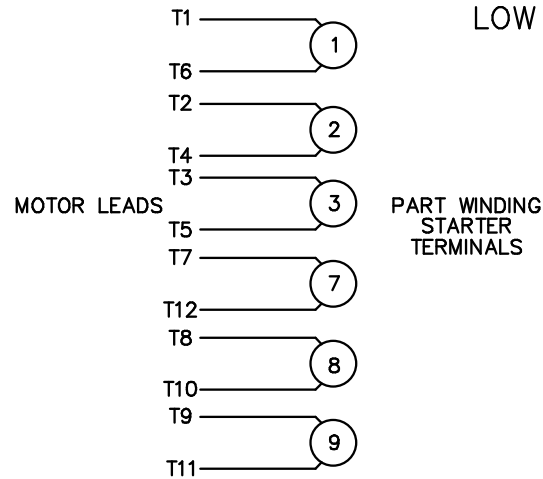
LOW VOLTAGE CONNECTION

HIGH VOLTAGE CONNECTION



REFER TO THE WYE-DELTA STARTER CONNECTION INSTRUCTIONS FOR PROPER CONNECTION OF POWER LINES TO STARTER.

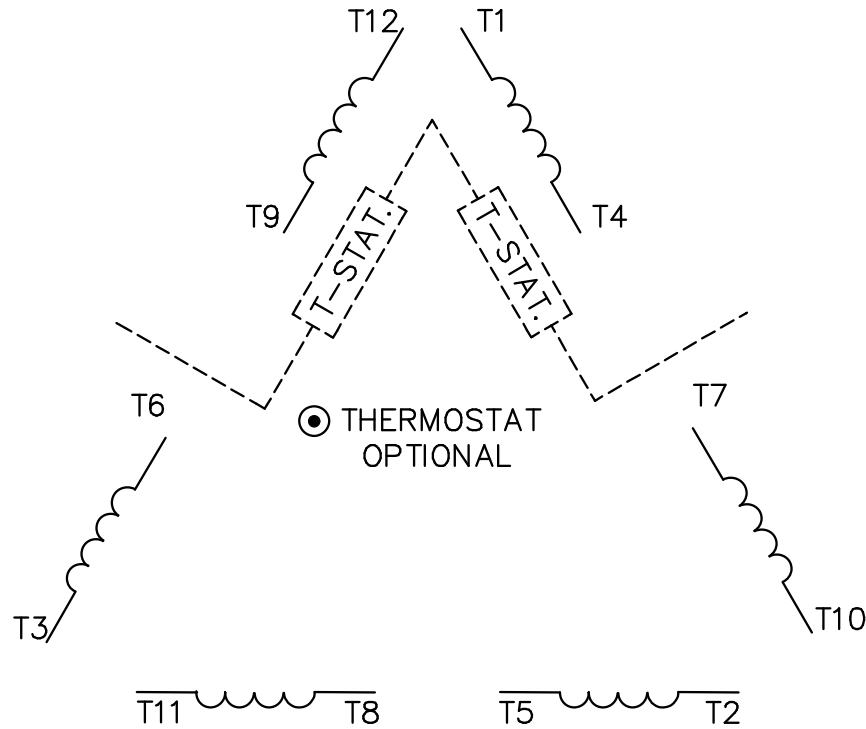
PART WINDING START USABLE ON 4 & 6 POLE MOTORS
LOW VOLTAGE CONNECTION ONLY



REFER TO THE PART WINDING STARTER INSTRUCTIONS FOR PROPER CONNECTION OF POWER LINES TO STARTER.

REFER TO THE CUTLER - HAMMER OR EQUIV. FOR PROPER SELECTION OF OVERLOAD HEATER COILS.

LINE LEADS



ROTATION CAN BE REVERSED BY INTERCHANGING ANY TWO LINE LEADS
⊙ RED LEADS OR P1, P2, FOR N/C THERMOSTAT

ACROSS THE LINE START & RUN

	LINE 1	LINE 2	LINE 3	JOIN & INSULATE SEPARATELY
HIGH VOLT	T1,T12	T2,T10	T3,T11	(T4,T7) (T5,T8) (T6,T9)
LOW VOLT	T1,T6 T7,T12	T2,T4 T8,T10	T3,T5 T9,T11	



ELECTRIC MOTORS
GEARMOTORS
AND DRIVES

DRAWN WLW 09/08/77
CHK RPB 09/12/77
APPD JCW 09/12/77

NO.	REVISION	BY & DATE	CHK	TOLERANCES UNLESS SPECIFIED		FINISH
				DEC.	INCHES	
03	REV'D LOW VOLTAGE CONN. LEADS PER ELEC.	BJB 06/07/00		.X	±.1	
02	ADDED T-STAT. NOTES PER ELECTRICAL	KMM 06/02/98		.XXX	±.005	
01	REDRAWN TO CAD	DBT 06/02/97		.XXXX	±.0005	
				ANG	±1/2°	

TITLE	DELTA - WYE CONNECTION DIAGRAM	SCALE	1=1
MAT'L.		REF	
FINISH		FMP	
RFP	CAD FILE	SIZE	DRAWING NO.
DIST	00417201	A	004172-01
			REV. 03