



A Regal Brand

Catalog # : 121009.00
Product Type: AC MOTOR
Description:

Model: 121009.00
Stock: Y

Quote: Price:

Date: 08/20/2018



A Regal Brand

Catalog # : 121009.00
Product Type: AC MOTOR
Description:

Model: 121009.00
Stock: Y

Engineering Data

Volts	208-230	Volts	460	Volts	
F.L. Amps	3	F.L. Amps	1.5	F.L. Amps	
S. F Amps	3.2	S. F Amps	1.6	S. F Amps	

RPM	1200	Hertz	60	TYPE	TF
HP	3/4	Duty	CONTINUOUS		
KW	.56				
Frame	143	Serv. Factor	1.15	Phase	3
Max Amb	40	Design	B	Code	J
Insul Class	B	Protection	NOT	Therm.Prot.	
Eff 100%	75.5	Eff 75%		PF	62
UL	Y-(LEESON UL REC)	CSA	Yes	Bearing OPE	6203
CC Number	EXEMPT	CE	No	Bearing PE	6205
Load Type		Inverter Type		Speed Range	NONE

Motor Wt.	31 LB	Enclosure	TEFC	Lubrication	POLYREX EM
Nameplate	993500	Mounting	RIGID	Rotation	REV
Assembly		Shaft Dia.	7/8 IN	Ext. Diag.	005010.01
Cust Part No		Outline	028765-650	Ext. Diag2	
Packaging	B	Outline Dash No		Winding	T63642
Carton Label	Leeson Gen Purpose			GROUP :	3
Iris		Paint	BLUE - LEESON (ENAMEL)	Test Card	04

Form Factor		RMS Amps		Const TorqueSpeed Range	
Torque		Peak			
AB Code		Peak@DegC			
Resistance					
Connection					

Rework Status Rework TYPE

Hazardous Loc
Explosion Proof
Class
Class

NONE

Temp Op Code
GROUP
GROUP

Brake Motors
FORCE
VDC
ADC

Brake Coil OHMs @25 C

Performance					
Torque UOM	LB-FT		Inertia (WK ²)	.09 LB-FT ²	
Torque	3.4(Full Load)		10.5(Break Down)	7.75(Pull Up)	7.8(Locked Rotor)
CURRENT (amps)	3(Full Load)		0(Break Down)	0(Pull Up)	14.3(Locked Rotor)
Efficiency (%)	0(Full Load)		74(75% Load)	70.4(50% Load)	60.7(25% Load)
PowerFactor	(Full Load)		50(75% Load)	39.2(50% Load)	25(25% Load)

Load Curve Data @60 HzVolts,3/4Horsepower

Load	Amps	KW	RPM	Torque	Eff	PF	Rise By Resis	Frame Rise
0.0	2.3	0.089	1199	0.0	0.0	9.6	0.0	-
0.25	2.37	0.237	1190	0.85	60.7	25.0	0.0	-
0.5	2.52	0.393	1180	1.7	70.4	39.2	0.0	-
0.75	2.74	0.55	1168	2.5	74.0	50.0	0.0	-
1.0	3.03	0.718	1155	3.35	75.5	62.0	66.1	-
1.25	3.35	0.87	1143	4.2	78.4	65.2	0.0	-
1.5	3.74	1.045	1129	5.0	76.9	70.3	0.0	-

SOURCE: CALCULATED GROUP: 3

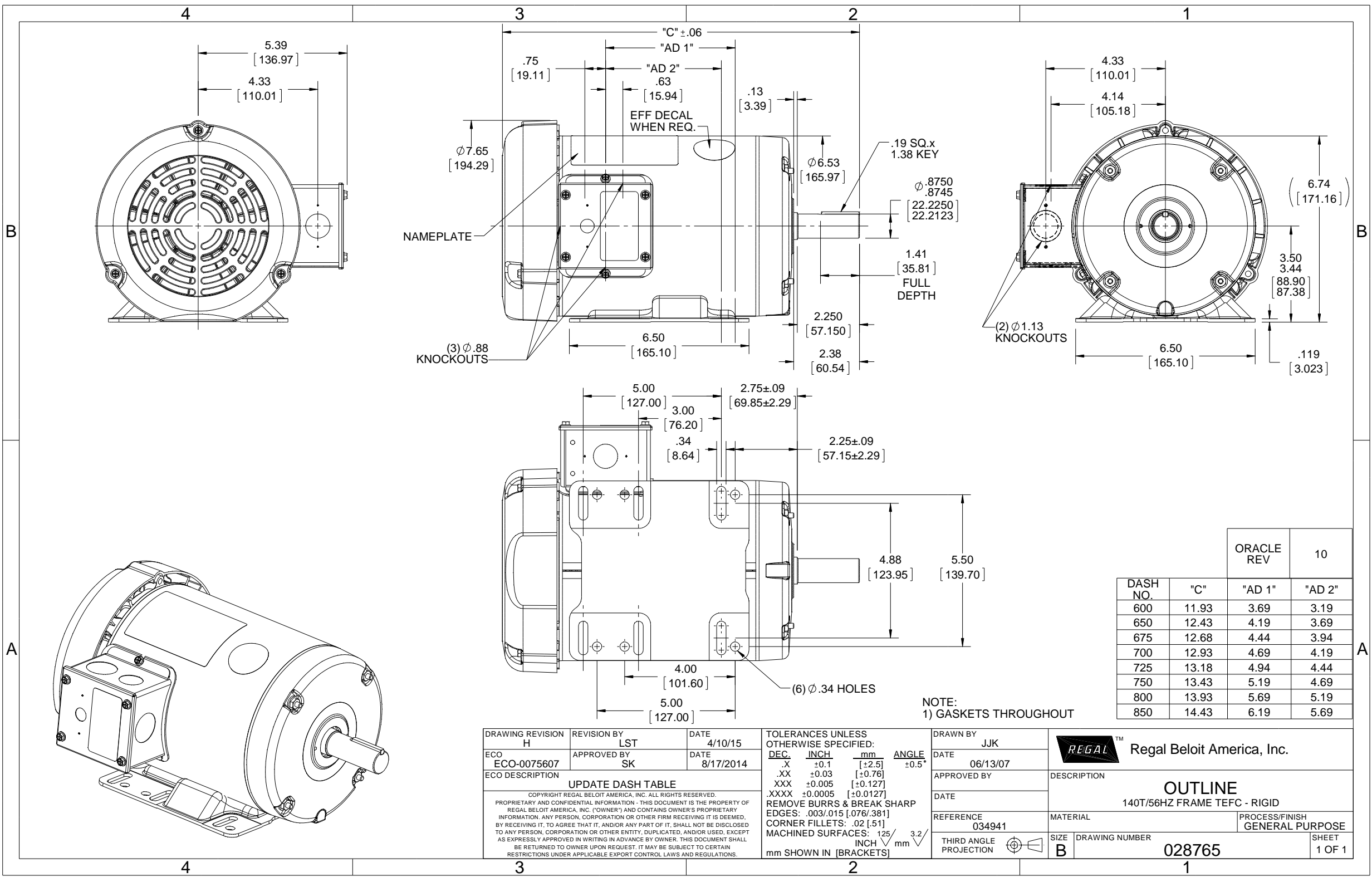
Load Curve Data @60HzVolts,3/4Horsepower

Load	Amps	KW	RPM	Torque	Eff	PF	Rise By Resis	Frame Rise
------	------	----	-----	--------	-----	----	---------------	------------

Load Curve Data Not Available

Quote: Price:

Date: 08/20/2018



DASH NO.	"C"	"AD 1"	"AD 2"
600	11.93	3.69	3.19
650	12.43	4.19	3.69
675	12.68	4.44	3.94
700	12.93	4.69	4.19
725	13.18	4.94	4.44
750	13.43	5.19	4.69
800	13.93	5.69	5.19
850	14.43	6.19	5.69

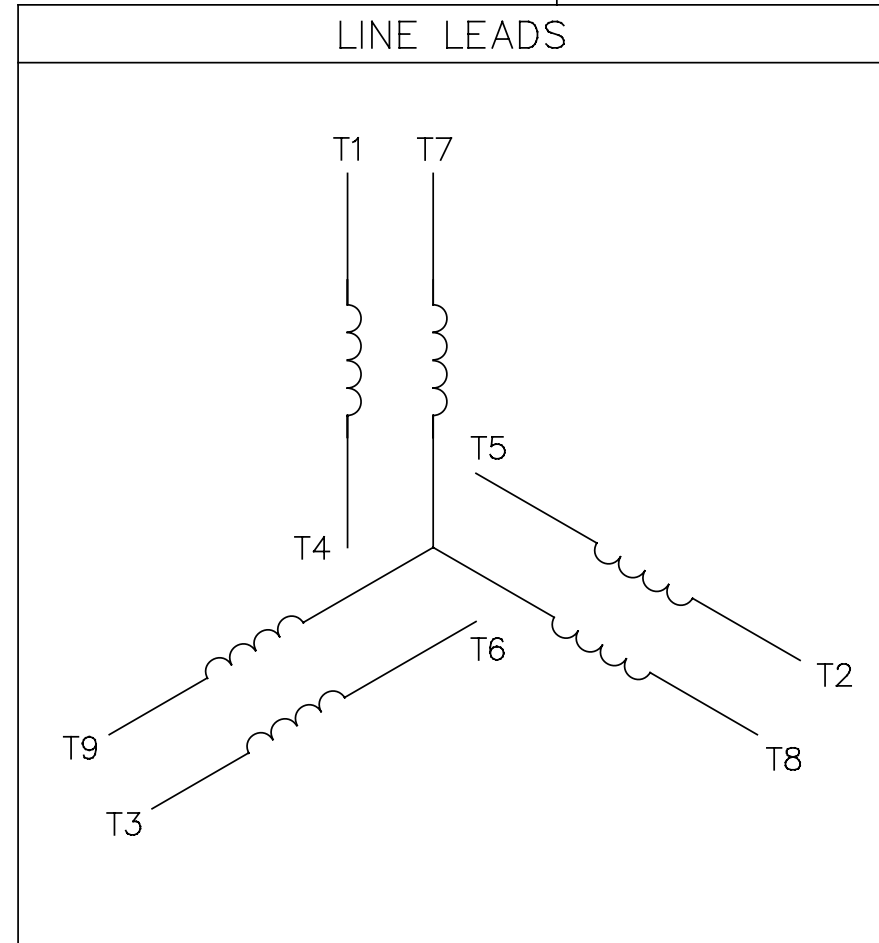
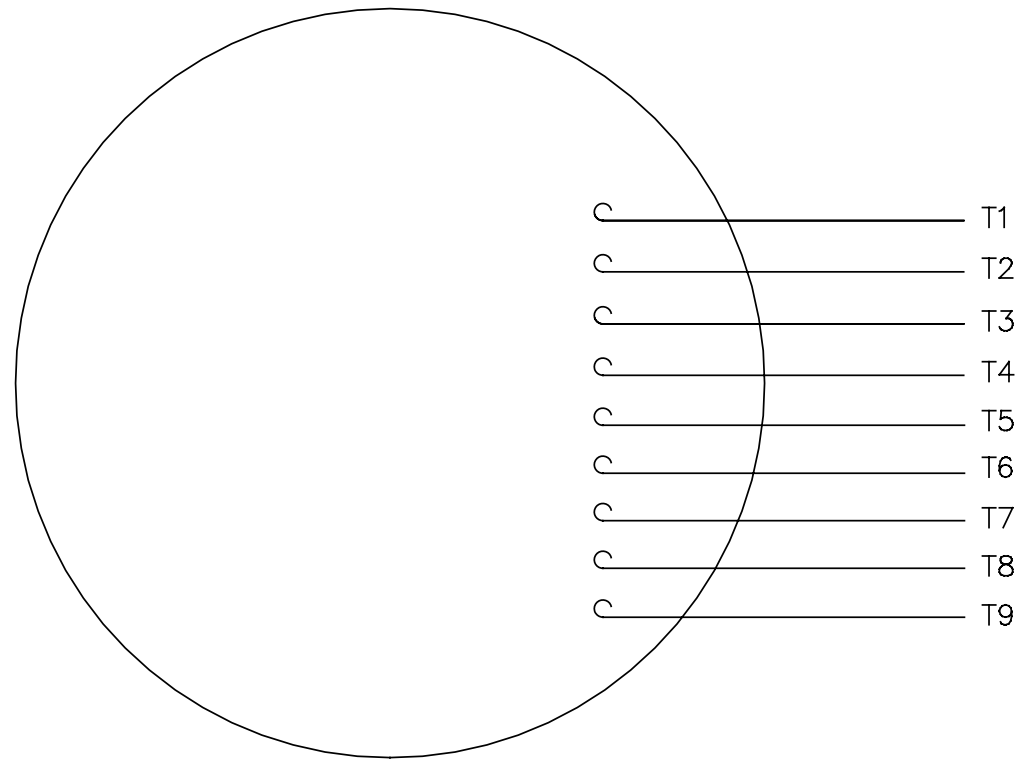
NOTE:
1) GASKETS THROUGHOUT

DRAWING REVISION H	REVISION BY LST	DATE 4/10/15	TOLERANCES UNLESS OTHERWISE SPECIFIED: DEC. INCH mm ANGLE .X ±0.1 [±2.5] ±0.5° .XX ±0.03 [±0.76] .XXX ±0.005 [±0.127] .XXXX ±0.0005 [±0.0127]	DRAWN BY JJK	REGAL™ Regal Beloit America, Inc.
ECO ECO-0075607	APPROVED BY SK	DATE 8/17/2014	DATE 06/13/07	DATE	
ECO DESCRIPTION UPDATE DASH TABLE			REMOVE BURRS & BREAK SHARP EDGES: .003/.015 [0.076/.381] CORNER FILLETS: .02 [51] MACHINED SURFACES: 125/3.2 mm INCH mm	APPROVED BY	DESCRIPTION OUTLINE 140T/56HZ FRAME TEFC - RIGID
COPYRIGHT REGAL BELOIT AMERICA, INC. ALL RIGHTS RESERVED. PROPRIETARY AND CONFIDENTIAL INFORMATION - THIS DOCUMENT IS THE PROPERTY OF REGAL BELOIT AMERICA, INC. ("OWNER") AND CONTAINS OWNER'S PROPRIETARY INFORMATION. ANY PERSON, CORPORATION OR OTHER FIRM RECEIVING IT IS DEEMED, BY RECEIVING IT, TO AGREE THAT IT, AND/OR ANY PART OF IT, SHALL NOT BE DISCLOSED TO ANY PERSON, CORPORATION OR OTHER ENTITY, DUPLICATED, AND/OR USED, EXCEPT AS EXPRESSLY APPROVED IN WRITING IN ADVANCE BY OWNER. THIS DOCUMENT SHALL BE RETURNED TO OWNER UPON REQUEST. IT MAY BE SUBJECT TO CERTAIN RESTRICTIONS UNDER APPLICABLE EXPORT CONTROL LAWS AND REGULATIONS.			REFERENCE 034941	MATERIAL	PROCESS/FINISH GENERAL PURPOSE
			THIRD ANGLE PROJECTION	SIZE B	DRAWING NUMBER 028765
					SHEET 1 OF 1

Uncontrolled Copy

005010-01

VIEW FROM OUTSIDE OF MOTOR AT SWITCH END.



VOLTAGE	L1	L2	L3	JOIN & INSULATE
HIGH	T1	T2	T3	(T4,T7) (T5,T8) (T6,T9)
LOW	T1,T7	T2,T8	T3,T9	T4,T5,T6

		TOLERANCES UNLESS SPECIFIED		REGAL™ Regal Beloit America, Inc.		DRAWN RDW 04/12/02	
		DEC.	INCHES			CHK	
		.X	±.1			APPD	
		.XX	±.01	TITLE		SCALE 1=1	
		.XXX	±.005	EXTERNAL WIRING DIAGRAM 3 PHASE W/O PROTECTOR		REF FIG.2-51	
A	UPDATED TO REGAL LOGO	SAJ	06/26/15	AJY	.XXXX	±.0005	MAT'L. DECAL - 004014
NO.	REVISION	BY & DATE	CHK	ANG	±1/2°		FINISH
THIS DRAWING IN DESIGN AND DETAIL IS OUR PROPERTY AND MUST NOT BE USED EXCEPT IN CONNECTION WITH OUR WORK ALL RIGHTS OF DESIGN AND INVENTION ARE RESERVED THIS IS AN ELECTRONICALLY GENERATED DOCUMENT - DO NOT SCALE THIS PRINT			RFP	04/12/02	CAD FILE	00501001	SIZE DRAWING NO. REV.
			DIST	BRF-NLV	A	005010-01	A