

BALDOR® • RELIANCE

Product Information Packet

VJMM3219T

7.5HP,3450RPM,3PH,60HZ,184JM,3634M,OPEN

Product Detail							
Revision:	V	Status:	PRD/A	Change #:		Proprietary:	No
Type:	AC	Prod Type:	3634M	Elec. Spec:	36WG0194	CD Diagram:	CD0005
Enclosure	OPEN	Mfg Plant:		Mech Spec:	36N072	Layout:	36LYN072
Frame:	184JM	Mounting:	F1	Poles:	02	Created Date:	
Base:	N	Rotation:	R	Insulation:	B	Eff. Date:	02-19-2007
Leads:	9#16					Replaced By:	
Nameplate NP1256L							
CAT.NO.	VJMM3219T						
SPEC.	36N72-194						
HP	7 1/2						
VOLTS	208-230/460						
AMP	19-18/9						
RPM	3450						
FRAME	184JM	HZ	60	PH	3		
SER.F.	1.15	CODE	J	DES	B	CLASS	B
NEMA-NOM-EFF	85.5	PF	91				
RATING	40C AMB-CONT						
CC		USABLE AT 208V	19				
DE	6207	ODE	6205				
ENCL	OPEN	SN					

Parts List			
Product ID	Description	Quantity	List Price
SA037423	SA 36N72-194	1.000	441.00
RA033448	RA 36N72-194	1.000	368.00
36CB3004	36 CB CASTING W/1.09 DIA LEAD HOLE @ 6:0	1.000	19.00
51XB1016A08	10-16X 1/2HXWSSLD SERTYB	2.000	2.00
11XW1032G06	10-32 X .38, TAPTITE II, HEX WSHR SLTD U	1.000	2.00
HW3001A01	D3019 BRASS WASHER(STIMP)	1.000	2.00
36EP3200A03	SPL FR ENDPLATE -OPEN- FOR EXT FAN & DRI	1.000	86.00
HW4500A01	1641B(ALEMITE)400 UNIV, GREASE FITT	1.000	2.00
HW5100A05	WVY WSHR F/205 & 304 BRGS	1.000	2.00
36EP3405A02	PUEP 182-4C OPEN 207 BRG W/BAFF. TSLV, G	1.000	91.00
36AD2000	AIR BAFFLE	1.000	6.00
60XW0632A06	6-32 X 3/8 TORX HEAD SCREW TAPTITE II	4.000	
HW4500A01	1641B(ALEMITE)400 UNIV, GREASE FITT	1.000	2.00
10XN2520A24	1/4-20X 1 1/2 HEX HD X	4.000	2.00
HW1001A25	LOCKWASHER 1/4, ZINC PLT .493 OD, .255 I	4.000	2.00
36FN3000A01SP	FAN EXTERNAL,PLASTIC, 7.00 OD, .912/.907	1.000	23.00
51XB1214A16	12-14X1.00 HXWSSLD SERTYB	1.000	2.00
36FH4012A01	DRIP COVER NOTCH BOTTOM, W/ AUTOPHERETIC	1.000	16.00
51XW1032A06	10-32 X .38, TAPTITE II, HEX WSHR SLTD S	3.000	3.00
36CB4516	36 LIPPED CB LID	1.000	2.00
51XW0832A07	8-32 X .44, TAPTITE II, HEX WSHR SLTD SE	4.000	2.00
HA1005A07SP	37-1412 SLINGER, 1.344 I.D., 2.25 O.D.	1.000	3.00
HW2501D13SP	KEY, 3/16 SQ X 1.375	1.000	2.00
HA7000A01	KEY RETAINER 7/8" DIA SHAFT	1.000	2.00

Parts List (continued)			
Product ID	Description	Quantity	List Price
10XF0440S02	04-40 X 1/8 TYPE F HEX HD STAINLESS STIC	2.000	2.00
MJ1000A02	GREASE, POLYREX EM EXXON	0.050	10.00
MG1000G27	PAINT- S9282E CHARCOAL GREY	0.022	4,000.00
HA3101A25	THRUBOLT 1/4-20 X 11.000 OHIO ROD	4.000	2.00
LB1125C01	STD (STOCK) CARTON LABEL BALDOR WITH FLA	1.000	2.00
LC0005E01	CONN.DIA./WARNING LABEL (LC0005/LB1119)	1.000	2.00
NP1256L	NP STD LASER ENGRAVED, UL CSA CC, W/O TH	1.000	3.00
36PA1001	PACKAGING GROUP	1.000	25.00
PK3082	STYROFOAB CRADLE	1.000	2.00

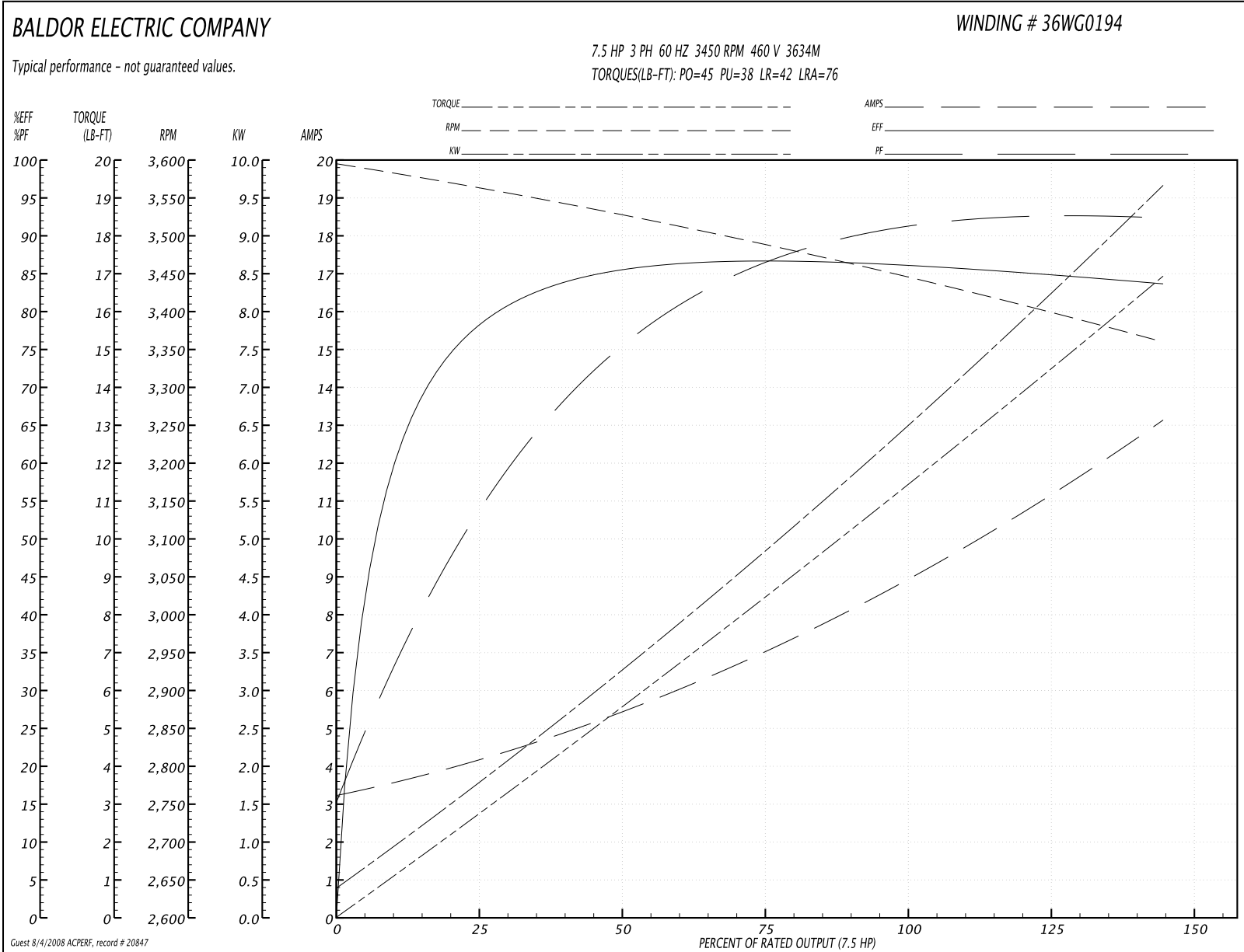
Performance Data at 460V, 60Hz, 7.5HP (Typical performance - Not guaranteed values)
General Characteristics

Full Load Torque:	11.3 LB-FT	Start Configuration:	DOL
No-Load Current:	3.3 Amps	Break-Down Torque:	45.0 LB-FT
Line-line Res. @ 25°C.:	2.0 Ohms A Ph / 0.0 Ohms B Ph	Pull-Up Torque:	38.0 LB-FT
Temp. Rise @ Rated Load:	65°C	Locked-Rotor Torque:	42.0 LB-FT
Temp. Rise @ S.F. Load:	85°C	Starting Current:	76.0 Amps

Load Characteristics

% of Rated Load:	25	50	75	100	125	150	S.F.
Power Factor:	62.0	80.0	88.0	92.0	94.0	95.0	93.0
Efficiency:	79.2	85.2	86.5	86.3	85.1	83.6	85.6
Speed:	3560.0	3526.0	3488.0	3451.0	3404.0	3359.0	3423.0
Line Amperes:	4.1	5.4	7.1	8.9	10.9	13.1	10.1

Performance Graph at 460V, 60Hz, 7.5HP (Typical performance - Not guaranteed values)



Performance Data at 208V, 60Hz, 7.5HP (Typical performance - Not guaranteed values)

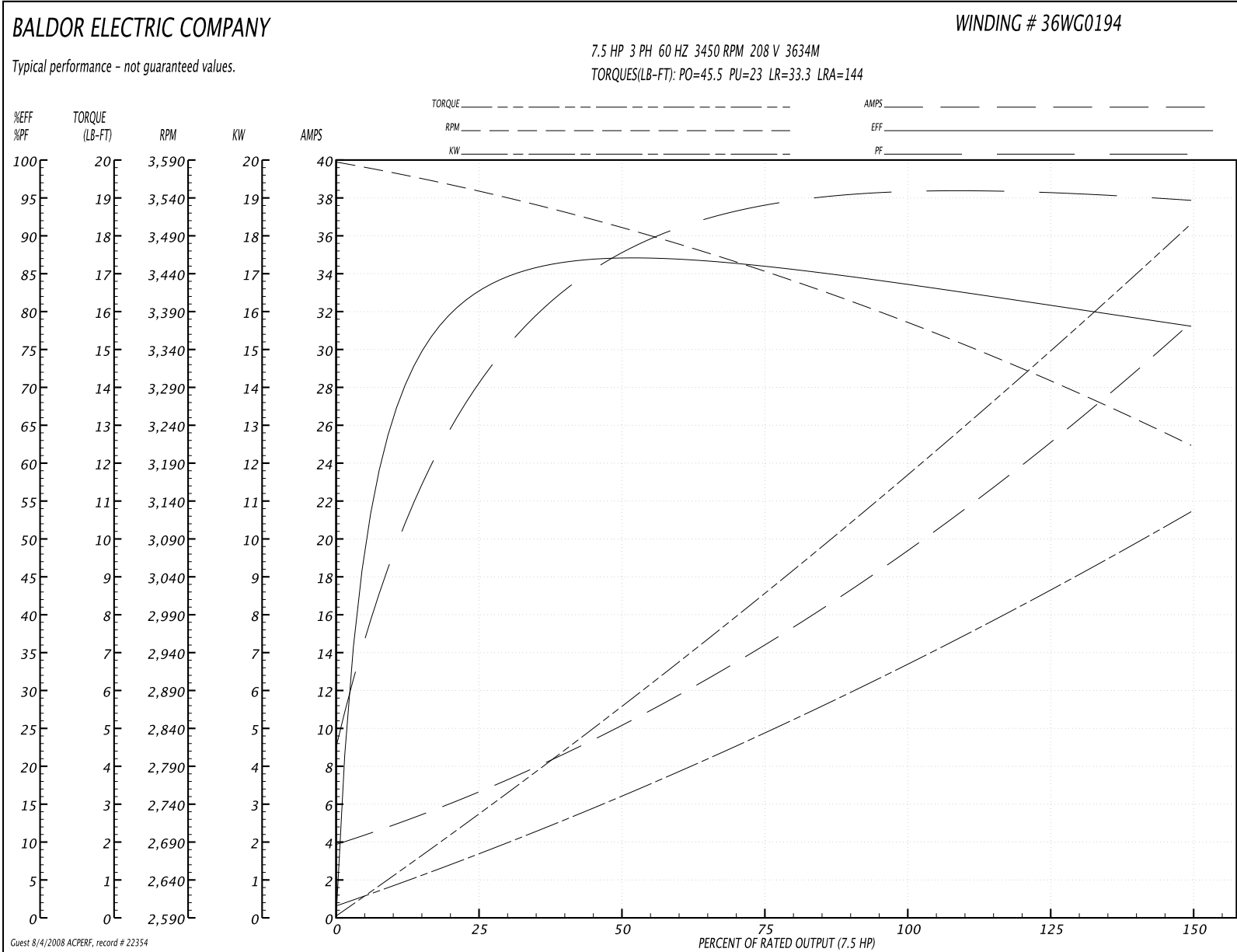
General Characteristics

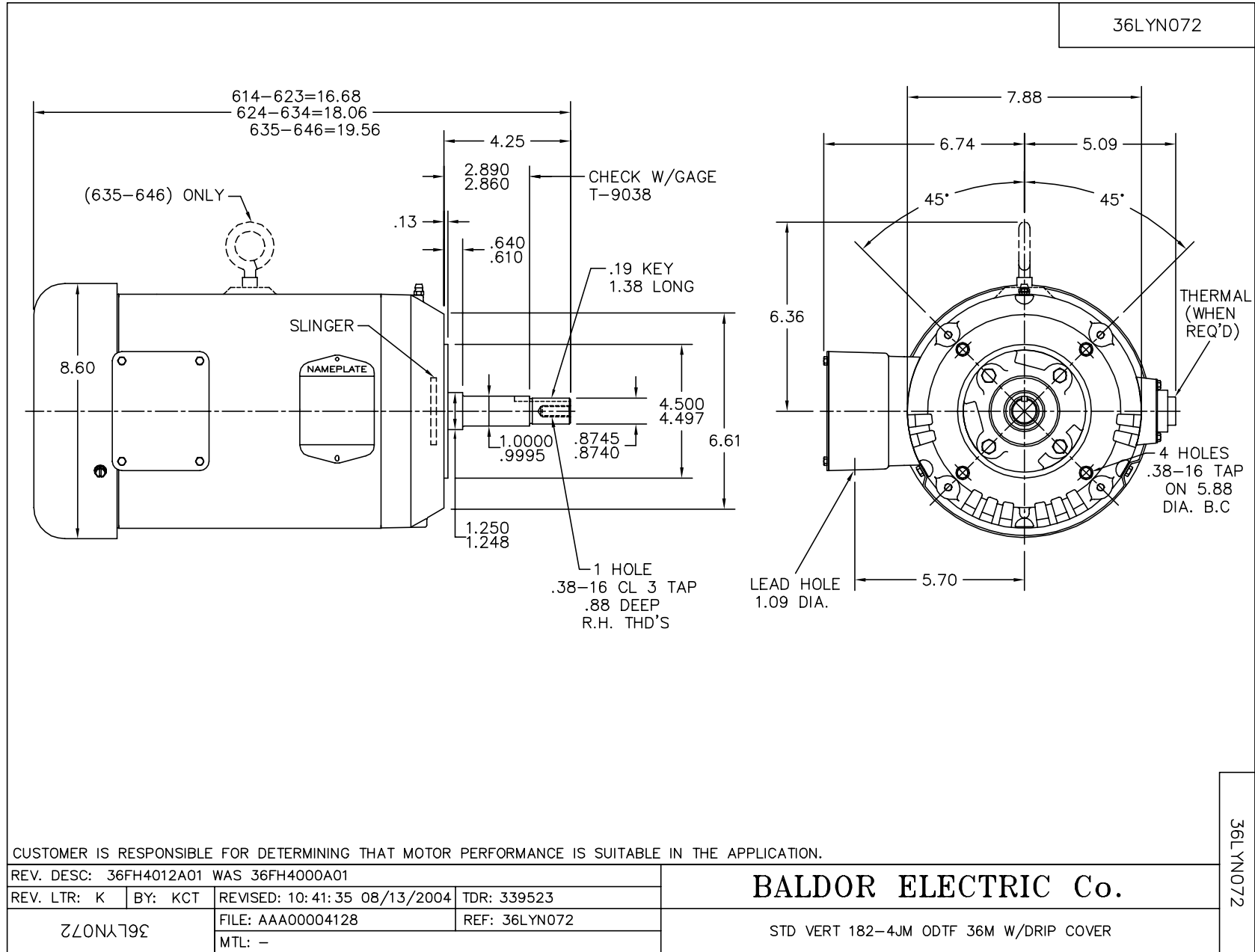
Full Load Torque:	11.6 LB-FT	Start Configuration:	DOL
No-Load Current:	3.97 Amps	Break-Down Torque:	45.5 LB-FT
Line-line Res. @ 25°C.:	0.497 Ohms A Ph / 0.0 Ohms B Ph	Pull-Up Torque:	23.0 LB-FT
Temp. Rise @ Rated Load:	74°C	Locked-Rotor Torque:	33.3 LB-FT
Temp. Rise @ S.F. Load:	94°C	Starting Current:	144.0 Amps

Load Characteristics

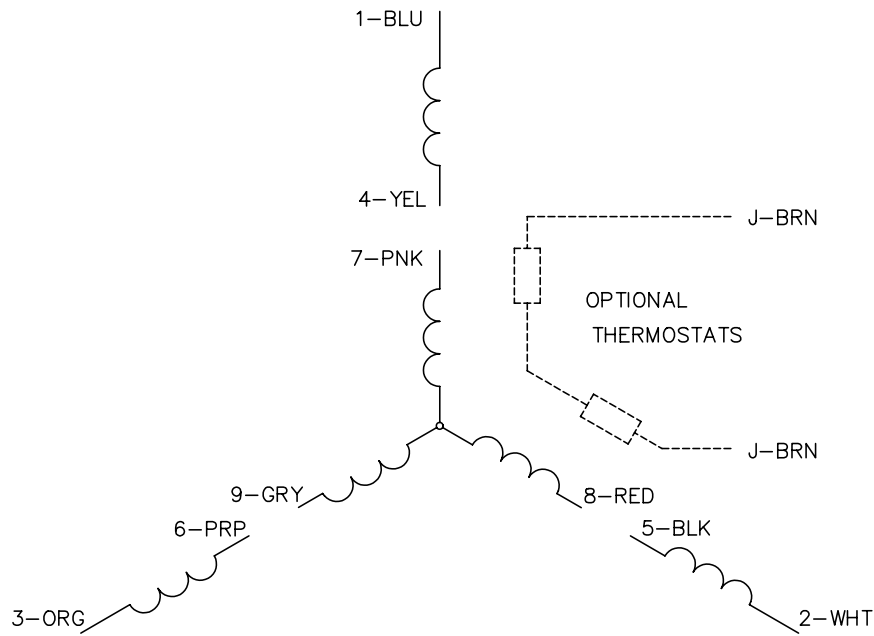
% of Rated Load:	25	50	75	100	125	150	S.F.
Power Factor:	74.0	89.0	94.0	96.0	94.0	95.0	95.0
Efficiency:	81.5	86.0	86.1	84.3	81.9	77.7	82.9
Speed:	3543.0	3494.0	3442.0	3376.0	3324.0	3202.0	3345.0
Line Amperes:	6.53	10.2	14.4	19.2	24.9	31.3	22.6

Performance Graph at 208V, 60Hz, 7.5HP (Typical performance - Not guaranteed values)

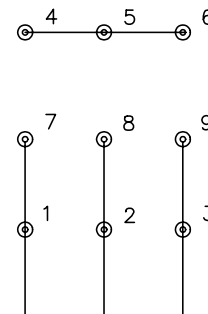




CD0005

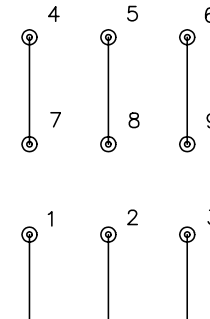


LOW VOLTAGE
(2Y)



LINE

HIGH VOLTAGE
(1Y)



LINE

NOTES:

1. INTERCHANGE ANY TWO LINE LEADS TO REVERSE ROTATION.
2. OPTIONAL THERMOSTATS ARE PROVIDED WHEN SPECIFIED.
3. ACTUAL NUMBER OF INTERNAL PARALLEL CIRCUITS MAY BE A MULTIPLE OF THOSE SHOWN ABOVE.
4. LEAD COLORS ARE OPTIONAL. LEADS MUST ALWAYS BE NUMBERED AS SHOWN.

REV. DESC: REVISE TO SHOW OPTIONAL COLORS			
REV. LTR: E	BY: JLP	REVISED: 01/19/99 10:15	TDR: 0171435
90000		FILE: AAA00005140	MDL: -
		MTL: -	

BALDOR ELECTRIC Co.

3PH, DV, 9 LEADS

CD0005