

# **BALDOR® • RELIANCE**

**Product Information Packet**

**ELECTRIC MOTOR WHOLESAL.COM**

**EM3710T-58**

**7.5HP, 1460RPM, 3PH, 50HZ, 213T, 3736M, TEFC, F**

Part Detail							
Revision:	-	Status:	PRD/A	Change #:		Proprietary:	No
Type:	AC	Prod. Type:	3736M	Elec. Spec:	37WGS060	CD Diagram:	CD0382
Enclosure:	TEFC	Mfg Plant:		Mech. Spec:	37A001	Layout:	37LYA001
Frame:	213T	Mounting:	F1	Poles:	04	Created Date:	12-22-2015
Base:	RG	Rotation:	R	Insulation:	F	Eff. Date:	12-29-2015
Leads:	6#14					Replaced By:	
Literature:		Elec. Diagram:					

Nameplate NP2716L											
CAT NO	EM3710T-58										
SPEC.	37A001S060G1										
HP	7.5							PH	3		
VOLTS	400										
AMP	10.8										
RPM	1460										
FRAME	213T				HZ	50			I.P.	54	
SER.F.	1.15			CODE	H		DES	B		CL	F
NOM.EFF.	89.6							%		(100%)	
PF	82							USABLE AT 208V			
RATING	40C AMB-CONT							CC			
DE BRG	6307				ODE	6206					
ENCL	TEFC			SN							
BLANK	IE3 - 90.7 (75%) 90.6 (50%)										

Parts List		
Part Number	Description	Quantity
SA312327	SA 37A001S060G1	1.000 EA
RA299768	RA 37A001S060G1	1.000 EA
37FN3002C01	EXFN, PLASTIC, 6.00 OD, 1.155 ID	1.000 EA
HW3200A01	3/8-16X3/4 I-BLT WELDED F/S	1.000 EA
37CB3006	37 CB CASTING W/1.38 LEAD HOLE @ 6:00	1.000 EA
37GS1000	GASKET, CONDUIT BOX STD., .06 THICK LEXI	1.000 EA
51XW2520A12	.25-20 X .75, TAPTITE II, HEX WSHR SLTD	2.000 EA
11XW1032G06	10-32 X .38, TAPTITE II, HEX WSHR SLTD U	1.000 EA
37EP3101A01	FR ENDPLATE, FOR ROUTING PURPOSES	1.000 EA
HW4500A01	1641B(ALEMITE)400 UNIV, GREASE FITT	1.000 EA
HW5100A06	W2420-025 WVY WSHR (WB)	1.000 EA
37PE3100A01	PUEP ASSEMBLY - ROUTING PUPROSES	1.000 EA
HW4500A01	1641B(ALEMITE)400 UNIV, GREASE FITT	1.000 EA
XY3118A12	5/16-18 HEX NUT DIRECTIONAL SERRATION	4.000 EA
51XB1214A20	12-14X1.25 HXWSSLD SERTYB	1.000 EA
07FH4007SP	PRIMED	1.000 EA
51XW1032A06	10-32 X .38, TAPTITE II, HEX WSHR SLTD S	3.000 EA
37CB4516	LIPPED LID FOR 37 FRAME NEC KOBX	1.000 EA
37GS1008	37 GS FOR CB LID - LEXIDE	1.000 EA
51XW0832A07	8-32 X .44, TAPTITE II, HEX WSHR SLTD SE	4.000 EA
HW2501F21	KEY, 5/16 SQ X 2.375	1.000 EA
HA7000A02	KEY RETAINER RING, 1 1/8 DIA, 1 3/8 DIA	1.000 EA
LB1115N	LABEL,LIFTING DEVICE (ON ROLLS)	1.000 EA
85XU0407S04	4X1/4 U DRIVE PIN STAINLESS	2.000 EA

<b>Parts List (continued)</b>		
<b>Part Number</b>	<b>Description</b>	<b>Quantity</b>
MJ1000A02	GREASE, POLYREX EM EXXON (USe 4824-15A)	0.050 LB
MG1000G27	MED CHARCOAL METALLIC GREY 400-0096	0.028 GA
HA3104A17	5/16-18X13.250 T-BLT/OHIO	4.000 EA
HA4067A01	PUSH IN DRAIN FITTING (BLACK)	1.000 EA
HA4067A01	PUSH IN DRAIN FITTING (BLACK)	1.000 EA
LB1119N	WARNING LABEL	1.000 EA
LC0382	CONNECTION LABEL	1.000 EA
MN416A01	TAG-INSTAL-MAINT no wire (1000/bx) 11/14	1.000 EA
NP2716L	ALUM SUPER-E NEMA IE3 UL CSA CC CE	1.000 EA
G0PA1000	PKG GRP, PRINT PK1026A06	1.000 EA

**AC Induction Motor Performance Data**

Record # 54637 - Typical performance - not guaranteed values

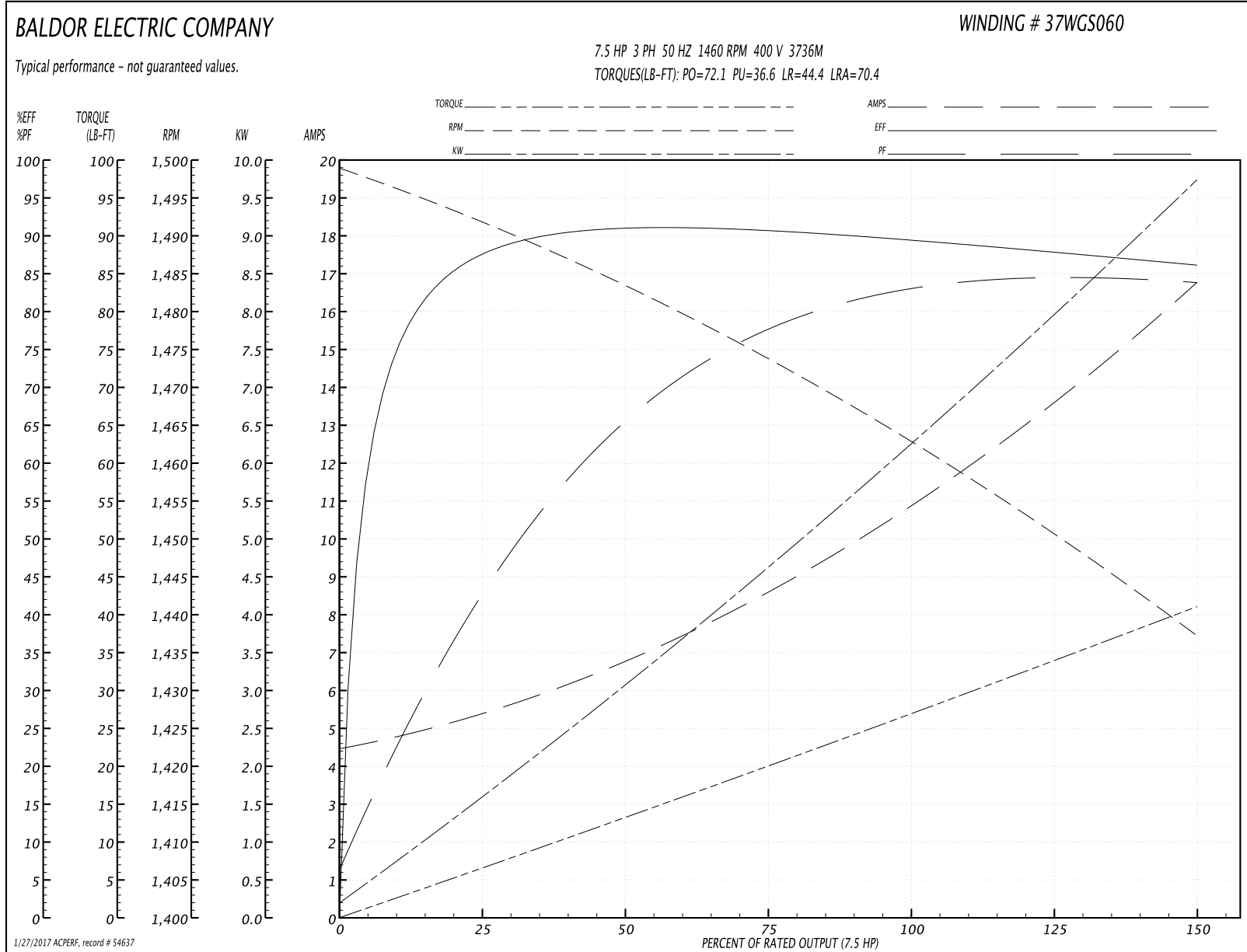
<b>Winding:</b> 37WGS060-R011	<b>Type:</b> 3736M	<b>Enclosure:</b> TEFC
-------------------------------	--------------------	------------------------

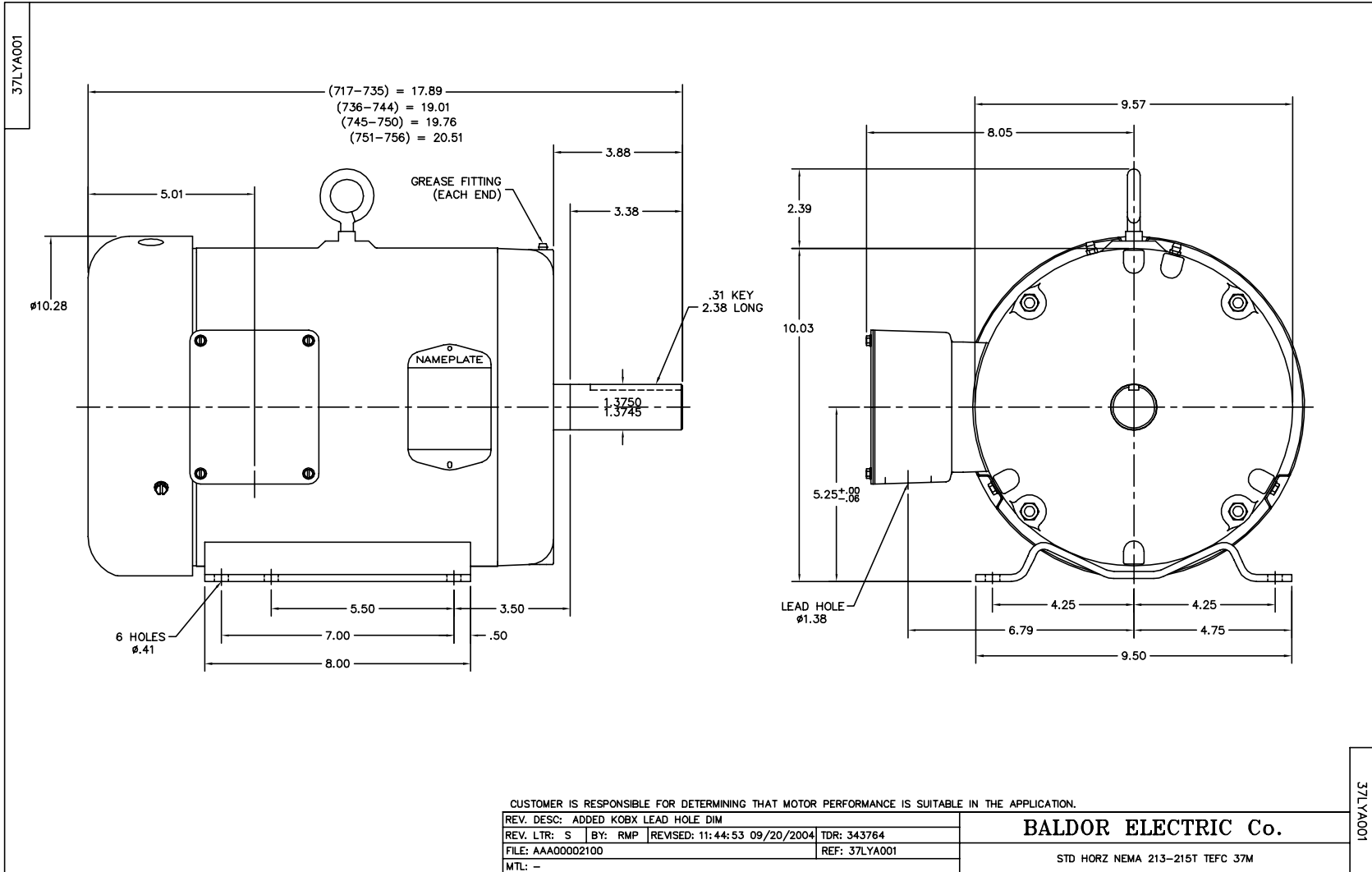
Nameplate Data				400 V, 50 Hz: Single Voltage Motor	
Rated Output (HP)	7.5			Full Load Torque	26.9 LB-FT
Volts	400			Start Configuration	direct on line
Full Load Amps	10.8			Breakdown Torque	72.1 LB-FT
R.P.M.	1460			Pull-up Torque	36.6 LB-FT
Hz	50	Phase	3	Locked-rotor Torque	44.4 LB-FT
NEMA Design Code	B	KVA Code	H	Starting Current	70.4 A
Service Factor (S.F.)	1.15			No-load Current	4.62 A
NEMA Nom. Eff.	89.6	Power Factor	82	Line-line Res. @ 25°C	1.49 Ω
Rating - Duty	50C AMB-CONT			Temp. Rise @ Rated Load	74°C
S.F. Amps				Temp. Rise @ S.F. Load	93°C
				Locked-rotor Power Factor	43
				Rotor inertia	0.885 LB-FT <sup>2</sup>

Load Characteristics 400 V, 50 Hz, 7.5 HP

% of Rated Load	25	50	75	100	125	150	S.F.
Power Factor	45	67	77	82	84	84	83
Efficiency	87	90.5	90.7	89.6	88.1	86	88.7
Speed	1492	1483	1474	1463	1451	1437	1456
Line amperes	5.17	6.66	8.66	11	13.6	16.7	12.6

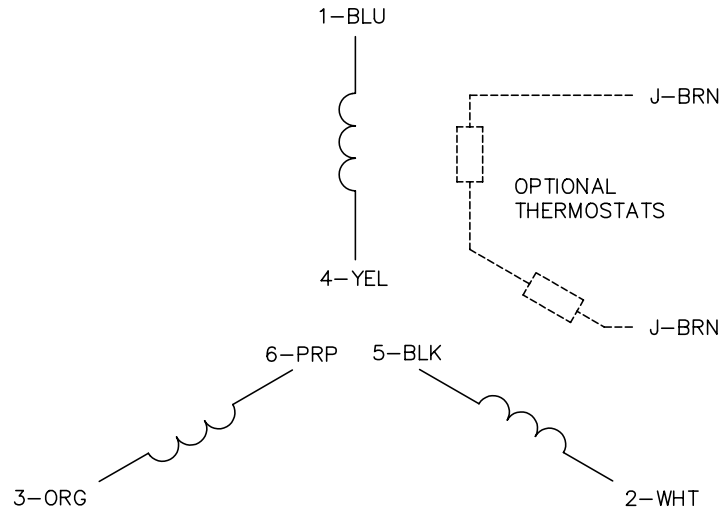
Performance Graph at 400V, 50Hz, 7.5HP Typical performance - Not guaranteed values



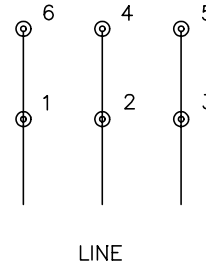




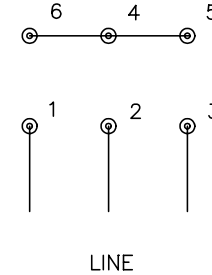
CD0382



RUN CONNECTION  
(1D)



START CONNECTION  
(1Y)



NOTES:

1. INTERCHANGE ANY TWO LINE LEADS TO REVERSE ROTATION.
2. OPTIONAL THERMOSTATS ARE PROVIDED WHEN SPECIFIED.
3. ACTUAL NUMBER OF INTERNAL PARALLEL CIRCUITS MAY BE A MULTIPLE OF THOSE SHOWN ABOVE.
4. LEAD COLORS ARE OPTIONAL. LEADS MUST ALWAYS BE NUMBERED AS SHOWN.
5. FOR ACROSS-THE-LINE STARTING, USE 'RUN' CONNECTION.

REV. DESC: ADD NOTE 5 FOR DOL STARTING			
REV. LTR: E	BY: JLP	REVISED: 11/30/00 2:26	TDR: 0226155
CD0382		FILE: AAA00005243	REF: -
		MTL: -	

**BALDOR ELECTRIC Co.**

3PH, SV, 6 LEADS, Y START/D RUN

CD0382