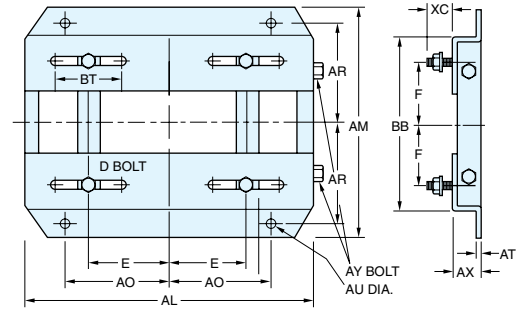
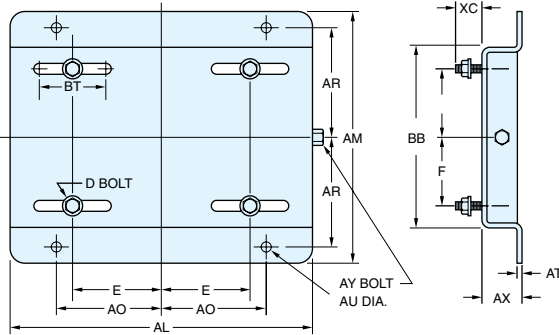


**ADJUSTABLE MOTOR BASES—NEMA 48-447T FRAMES**

Heavy gauge steel mounting bases simplify the installation of motors and make the tensioning, maintenance and replacement of belts a simple efficient task. Fabricated from sheet or steel plate, then primed and finished in a gray rust and corrosion resistant oven-baked finish. Gussets and

reinforcing channels on larger units and continuous seam welding on all units give these bases strength and durability for a long life. A single (215T frame and smaller) or double (NEMA 254T frame and larger) zinc plated adjusting screw is provided. Motor mounting bolts are included.



**NEMA 48 thru 215T**

**NEMA 254T thru 447T**

| Frame | Catalog Number | AL     | AM     | AX    | BB     | E      | F      | AO      | AR     | AU** | BT    | AT   | XC      | D* Bolt     | AY Bolt  | App. Wgt. (lbs.) |
|-------|----------------|--------|--------|-------|--------|--------|--------|---------|--------|------|-------|------|---------|-------------|----------|------------------|
| 48    | 175032.00      | 10     | 6 1/4  | 1 1/8 | 4 1/4  | 2 1/8  | 1 3/8  | 3 1/2   | 2 3/4  | 3/8  | 3     | .078 | 7/8     | 5/16 x 1    | 3/8 x 4  | 2                |
| 56    | 175033.00      | 10 5/8 | 6 1/2  | 1 1/8 | 4 1/2  | 2 7/16 | 1 1/2  | 3 13/16 | 2 7/8  | 3/8  | 3     | .078 | 7/8     | 5/16 x 1    | 3/8 x 4  | 3                |
| 143T  | 175034.00      | 10 1/2 | 7 1/2  | 1 1/8 | 5 1/2  | 2 3/4  | 2      | 3 3/4   | 3 3/8  | 3/8  | 3     | .119 | 1 3/16  | 5/15 x 1    | 3/8 x 4  | 5                |
| 145T  | 175035.00      | 10 1/2 | 8 1/2  | 1 1/8 | 6 1/2  | 2 3/4  | 2 1/2  | 3 3/4   | 3 7/8  | 3/8  | 3     | .119 | 1 3/16  | 5/15 x 1    | 3/8 x 4  | 6                |
| 182T  | 175036.00      | 12 3/4 | 9 1/2  | 1 1/2 | 6 1/2  | 3 3/4  | 2 1/4  | 4 1/2   | 4 1/4  | 1/2  | 3     | .134 | 1 1/2   | 3/8 x 1 3/4 | 1/2 x 5  | 9                |
| 184T  | 175037.00      | 12 3/4 | 10 1/2 | 1 1/2 | 7 1/2  | 3 3/4  | 2 3/4  | 4 1/2   | 4 3/4  | 1/2  | 3     | .134 | 1 1/2   | 3/8 x 1 3/4 | 1/2 x 5  | 9                |
| 213T  | 175038.00      | 15     | 11     | 1 3/4 | 7 1/2  | 4 1/4  | 2 3/4  | 5 1/4   | 4 3/4  | 1/2  | 3 1/2 | .164 | 1 1/2   | 3/8 x 1 3/4 | 1/2 x 5  | 13               |
| 215T  | 175039.00      | 15     | 12 1/2 | 1 3/4 | 9      | 4 1/4  | 3 1/2  | 5 1/4   | 5 1/2  | 1/2  | 3 1/2 | .164 | 1 1/2   | 3/8 x 1 3/4 | 1/2 x 5  | 15               |
| 254T  | 175040.00      | 17 3/4 | 15 1/8 | 2     | 10 3/4 | 5      | 4 1/8  | 6 1/4   | 6 5/8  | 5/8  | 4     | 3/16 | 1 7/16  | 1/2 x 1 3/4 | 5/8 x 6  | 17               |
| 256T  | 175041.00      | 17 3/4 | 16 7/8 | 2     | 12 1/2 | 5      | 5      | 6 1/4   | 7 1/2  | 5/8  | 4     | 3/16 | 1 7/16  | 1/2 x 1 3/4 | 5/8 x 6  | 18               |
| 284T  | 175042.00      | 19 3/4 | 16 7/8 | 2     | 12 1/2 | 5 1/2  | 4 3/4  | 7       | 7 1/2  | 5/8  | 4 1/2 | 3/16 | 1 11/16 | 1/2 x 2     | 5/8 x 6  | 21               |
| 286T  | 175043.00      | 19 3/4 | 18 3/8 | 2     | 14     | 5 1/2  | 5 1/2  | 7       | 8 1/4  | 5/8  | 4 1/2 | 3/16 | 1 11/16 | 1/2 x 2     | 5/8 x 6  | 22               |
| 324T  | 175044.00      | 22 3/4 | 19 1/4 | 2 1/2 | 14     | 6 1/4  | 5 1/4  | 8       | 8 1/2  | 3/4  | 5 1/4 | 3/16 | 2 3/16  | 5/8 x 2 1/2 | 3/4 x 9  | 31               |
| 326T  | 175045.00      | 22 3/4 | 20 3/4 | 2 1/2 | 15 1/2 | 6 1/4  | 6      | 8       | 9 1/4  | 3/4  | 5 1/4 | 3/16 | 2 3/16  | 5/8 x 2 1/2 | 3/4 x 9  | 32               |
| 364T  | 175046.00      | 25 1/2 | 20 1/2 | 2 1/2 | 15 1/2 | 7      | 5 5/8  | 9       | 9 1/8  | 3/4  | 6     | 1/4  | 2 1/16  | 5/8 x 2 1/2 | 3/4 x 9  | 44               |
| 365T  | 175047.00      | 25 1/2 | 21 1/2 | 2 1/2 | 16 1/2 | 7      | 6 1/8  | 9       | 9 5/8  | 3/4  | 6     | 1/4  | 2 1/16  | 5/8 x 2 1/2 | 3/4 x 9  | 45               |
| 404T  | 175048.00      | 28 3/4 | 22 3/8 | 3     | 16 1/2 | 8      | 6 1/8  | 10      | 9 7/8  | 7/8  | 7     | 1/4  | 2 1/2   | 3/4 x 3     | 3/4 x 11 | 60               |
| 405T  | 175049.00      | 28 3/4 | 23 7/8 | 3     | 18     | 8      | 6 7/8  | 10      | 10 5/8 | 7/8  | 7     | 1/4  | 2 1/2   | 3/4 x 3     | 3/4 x 11 | 61               |
| 444T  | 175088.00      | 31 1/4 | 24 5/8 | 3     | 19 1/4 | 9      | 7 1/4  | 11      | 11     | 7/8  | 7 1/2 | 1/4  | 2 1/2   | 3/4 x 3     | 3/4 x 11 | 68               |
| 445T  | 175089.00      | 31 1/4 | 26 5/8 | 3     | 21 1/4 | 9      | 8 1/4  | 11      | 12     | 7/8  | 7 1/2 | 1/4  | 2 1/2   | 3/4 x 3     | 3/4 x 11 | 73               |
| 447T  | 175090.00      | 31 1/4 | 30 1/8 | 3     | 24 3/4 | 9      | 10     | 11      | 13 3/4 | 7/8  | 7 1/2 | 5/16 | 3       | 3/4 x 3 1/2 | 3/4 x 11 | 92               |
| 449T  | 175302.00      | 31 1/4 | 35 1/8 | 3     | 29 3/4 | 9      | 12 1/2 | 11      | 16 1/4 | 7/8  | 7 1/2 | 5/16 | 3       | 3/4 x 3 1/2 | 3/4 x 11 | 95               |

\* Motor mounting bolt diameter and length, four supplied with each base.  
\*\* Base mounting bolts, four required—not supplied with base.

**NOTE: These bases are not suitable for vertical mounting. All dimensions in inches.**

**TRANSITION BASES**

Transition bases compensate for the difference in mounting dimensions and shaft height of a rigid base NEMA T frame to the next higher NEMA U frame. This makes it possible, for example, to replace a 10 HP NEMA 254U frame motor with a 10 HP NEMA 215T frame motor without modifying the basic installation. Made of the same high-quality materials and

construction as the adjustable motor bases above. They are for horizontal mountings, shimming may be needed for direct coupled loads. Thread size listed is for mounting transition base to the "T" frame motor. Dimensions listed are for one piece—two are supplied, one for each side of the motor's foot.



| Converts T Frame | To U Frame | Catalog Number | App. Wgt. (lbs.) | Height (Inches) | Width (Inches) | Length (Inches) | Thread  |
|------------------|------------|----------------|------------------|-----------------|----------------|-----------------|---------|
| 143T/145T        | 182/184    | 175091.00      | 2                | 1               | 2 1/4          | 7 1/2           | 5/16-18 |
| 182T/184T        | 213/215    | 175092.00      | 3                | 3/4             | 1 3/4          | 9 1/2           | 3/8-16  |
| 213T/215T        | 254U/256U  | 175093.00      | 5                | 1               | 2 7/16         | 12 3/4          | 3/8-16  |
| 254T/256T        | 284U/286U  | 175094.00      | 8                | 3/4             | 2 3/4          | 14 1/4          | 1/2-13  |
| 284T/286T        | 324U/326U  | 175095.00      | 10               | 1               | 3 1/4          | 15 3/4          | 1/2-13  |
| 324T/326T        | 364U/365U  | 175097.00      | 13               | 1               | 3 11/16        | 16 1/2          | 5/8-11  |
| 364T/365T        | 404U/405U  | 175098.00      | 22               | 1               | 4 1/4          | 18 5/8          | 5/8-11  |
| 404T/405T        | 444U/445U  | 175127.00      | 24               | 1               | 4 1/4          | 21 5/8          | 3/4-10  |