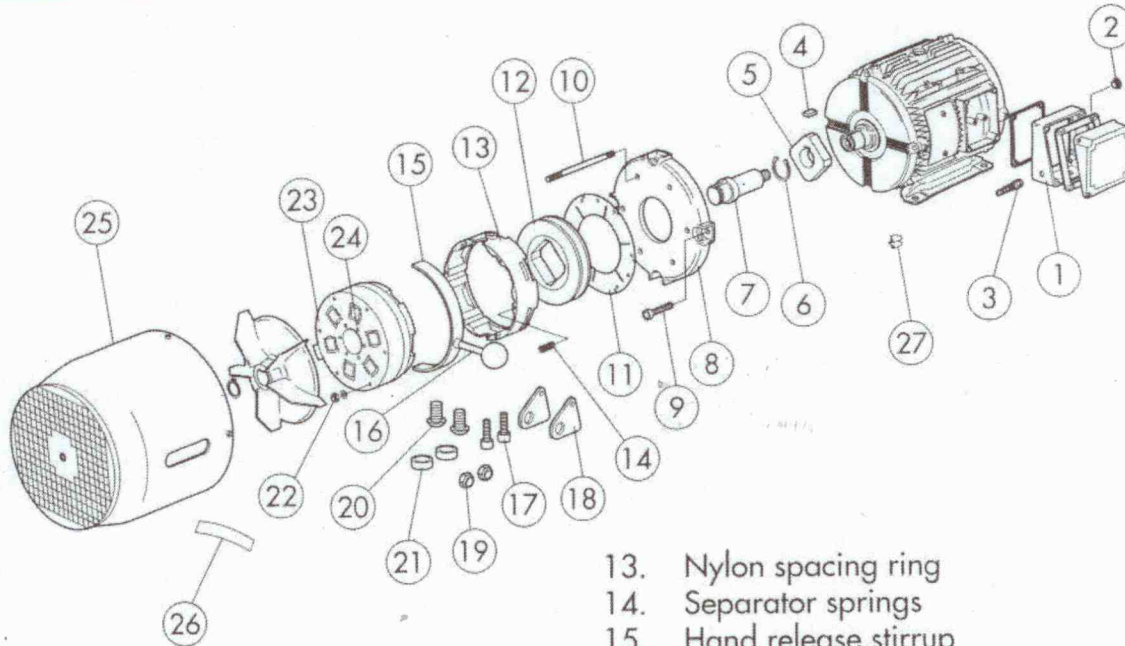


AC BRAKE KIT FITTING INSTRUCTIONS

Frames WD100 to WD132
Frames WD182 to WD215



POWERFUL CONNECTIONS



PARTS LIST

- | | |
|--|---|
| 1. Terminal box | 13. Nylon spacing ring |
| 2. Blanking plug | 14. Separator springs |
| 3. Cable gland | 15. Hand release stirrup |
| 4. Brake hub key | 16. Hand release handle |
| 5. Brake hub | 17. Cap headed screw |
| 6. Circlip | 18. Pivot plates |
| 7. Stub shaft | 19. Lock nuts |
| 8. Adapter plate | 20. Socket headed screws |
| 9. Socket headed adaptor fixing screws | 21. Spacing bushes |
| 10. Brake fixing studs | 22. Brake fixing dome nuts and cone washers |
| 11. Friction shim | 23. Brake coil housing |
| 12. Disc | 24. Transit screws |
| | 25. Fan cover |
| | 26. Label(s) |
| | 27. Cable clip |

Please check that all component parts are supplied as shown in the parts list above, read all instructions thoroughly before commencing work.

WARNING

Disconnect motor from any mains supply before modifying motor. These procedures should only be carried out by a competent technician using the correct tools.