

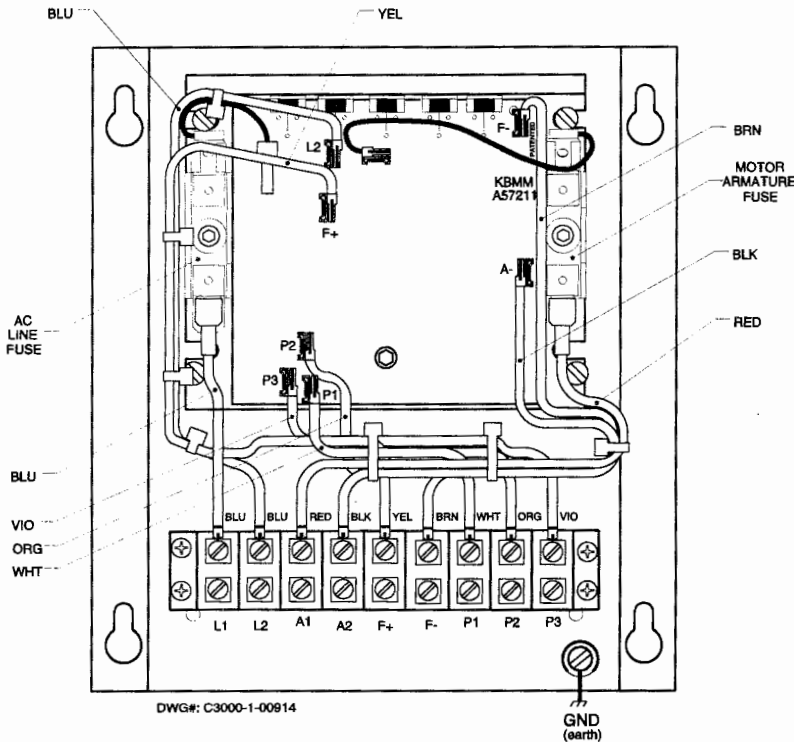
KBMM™ BARRIER TERMINAL ACCESSORY KIT – KB PART NO. 9883

(For Use with KBMM™ Controls and the KB Auxiliary Heatsink)

The Barrier Terminal Accessory Kit consists of a pre-wired Barrier Terminal Block. The wiring harness has been arranged to match the terminal locations on the KBMM™ control.

INSTALLATION

1. The KBMM™ control should be mounted to the KB Auxiliary Heatsink (P/N 9861) in accordance with the instructions provided.
2. The Barrier Terminal Accessory Kit may now be installed as follows:
 - a. Install the Barrier Terminal Block on the KB Auxiliary Heatsink using (4) 8-32 × 1/2" screws provided.
 - b. Install the 8-32 green ground screw with the brass cup washer to the lower right side of the Barrier Terminal Block.
 - c. For proper motor protection, the correct size armature line fuses should be installed. See KBMM™ instruction manual. (Note: Armature fuse size is approximately 1.7 × DC motor amps.)
 - d. Connect the wiring harness to the KBMM™ control using the Quick-Disconnect Terminals provided. (See drawing below.)



Harness Wiring	KBMM™ Connection Point
Short Blue	L1 (Lower End of Fuse Block) F1
Blue	L2
Brown	F-
Yellow	F+
Black	A-
Red	A+ (Lower End of Motor Fuse Block) F2
White	P1
Orange	P2
Violet	P3

WIRING

Connect the completed assembly of the KBMM™ control, the KB Auxiliary Heatsink and the Barrier Terminal Accessory Kit as follows:

- AC Line input to L1 and L2
- Armature Connections to A1 and A2
- Field (Shunt Motor only) to F+ and F-
- Potentiometer to P1, P2 and P3
- Ground Wire to Green Ground Screw

Be sure to read the KBMM™ Installation and Operating Instructions.

