

BALDOR® • RELIANCE

Product Information Packet

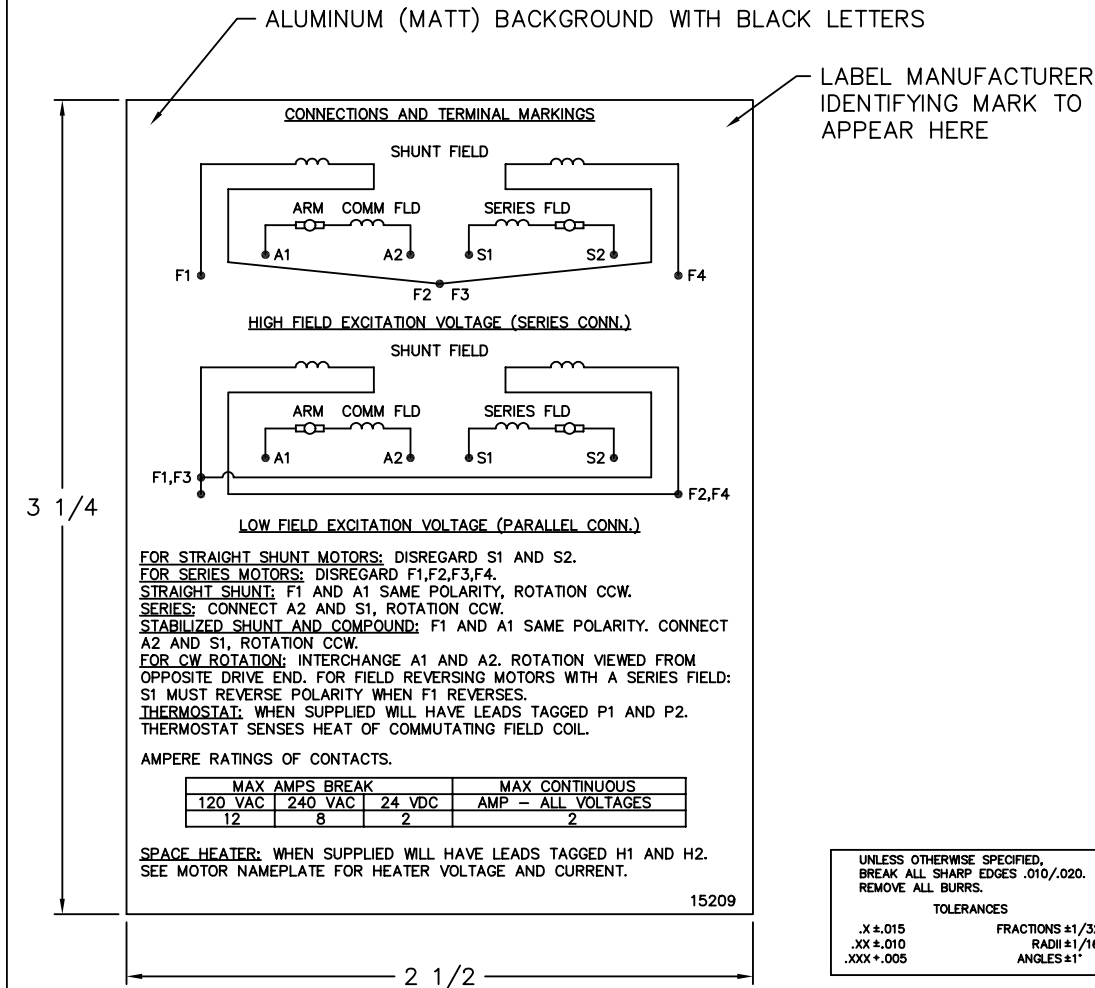
ELECTRIC MOTOR WHOLESale.COM

D5507P

7.5HP,1750/2300RPM,DC,2110AT,TEFC,F1

Part Detail			
Type:	DC	Prod. Type:	T
Power Code:	D	Weight:	310
Frame Group:	2110AT	Mounting Pos.:	F1
HP:	7.5	Enclosure:	TEFC
RPM:	1750/2300	Wound:	STR. SHUNT
Service Factor:	1.0	Arm V:	500
Arm A:	12.30	Field V:	300
Field A:	1.52	Field A Hot:	1.05-1.16/1.26-
Insulation Class:	F	Ambient:	40
Duty:	CONT	DE Bearing:	6207
ODE Bearing:	6207	Brushes:	150986-21-2
Brush Qty.:			

15209



NOTE:
 MATERIAL .005 MINIMUM FULL HARD ALUMINUM DULL FINISH.
 TEMP. RANGE -20°C TO +125°C MAXIMUM.
 FOR INDOOR AND OUTDOOR MOUNTING BACK.
 METAL, PRESSURE SENSITIVE BACK. MUST MEET CSA STANDARD.
 THE CSA IDENTIFYING MARK OF THE LABEL MANUFACTURER MUST APPEAR IN THE UPPER RIGHT HAND CORNER AS INDICATED.

MATL: NOTED			
REV:	G	CHANGE ALL "NAMEPLATE" TEXT TO "LABEL"	
60291	SCALE: -	BY: BKW	REVISED: 02/19/97
	FILE: CHB00002485	TDR: 0115147	

BALDOR ELECTRIC Co.

LABEL, CONNECTIONS AND TERMINAL MARKINGS DC

15209