

# INSTALLATION INSTRUCTIONS

## FORWARD-STOP-REVERSE SWITCH Part No. 9480

### for KBAC Series Drives



#### SAFETY WARNING! Please read carefully before proceeding.

This product should be installed and serviced by a qualified technician, electrician, or electrical maintenance person familiar with its operation and the hazards involved. Proper installation, which includes wiring, mounting in proper enclosure, fusing or other overcurrent protection, and grounding can reduce the chance of electrical shocks, fires, or explosion in this product or products used with this product, such as electric motors, switches, coils, solenoids, and/or relays. Eye protection must be worn and insulated adjustment tools must be used when working with control under power. This product is constructed of materials (plastics, metals, carbon, silicon, etc.) which may be a potential hazard. Proper shielding, grounding and filtering of this product can reduce the emission of radio frequency interference (RFI) which may adversely affect sensitive electronic equipment. If further information is required on this product, contact the Sales Department.

This control contains electronic Start/Stop circuits that can be used to start and stop the control. However, these circuits are never to be used as safety disconnects since they are not fail-safe. Use only the AC line for this purpose.

Be sure to follow all instructions carefully. Fire and/or electrocution can result due to improper use of this product.

It is the responsibility of the equipment manufacturer and individual installer to supply this Safety Warning to the ultimate end user of this product.

#### DESCRIPTION

The Forward-Stop-Reverse Switch assembly is designed for installation on the front cover of the KBAC inverters. It is used to provide electronic reversing for the KBAC.

#### MOUNTING



**WARNING!** Make sure that the AC line is disconnected before installing the Forward-Stop-Reverse Switch assembly.

1. Remove the rubber hole plug assembly that covers the FORWARD-STOP-REVERSE position by unscrewing the retainer nut that is located on the inside of the front cover.
2. Align the switch in the front cover and mount the Forward-Stop-Reverse Switch assembly using the rubber boot that is provided. Do not over tighten the rubber boot hex nut. See Figure 1.

**Note:** The switch bushing should protrude approximately 0.15" (3.8mm) through the front cover.

#### WIRING

1. Remove the jumper assembly that is installed on the FWD and COM terminals of the KBAC PC board. Using pliers, gently rock the female terminals back and forth horizontally while pulling them upward. See Figure 2.
2. Install the white/yellow wire from the Forward-Stop-Reverse Switch assembly to the FWD terminal of the KBAC PC board. See Figure 3.
3. Install the white/green wire from the Forward-Stop-Reverse Switch assembly to the COM terminal of the KBAC PC board. See Figure 3.
4. Install the white/red wire from the Forward-Stop-Reverse Switch assembly to the REV terminal of the KBAC PC board. See Figure 3.
5. Use the wire ties that are provided to secure switch wires.

FIGURE 1 - MOUNTING THE SWITCH

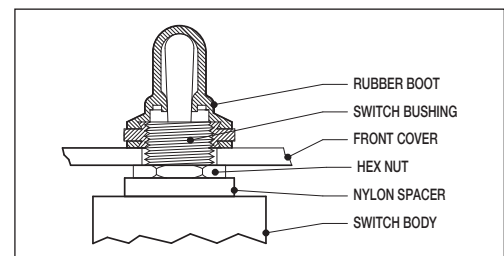


FIGURE 2 - JUMPER ASSEMBLY

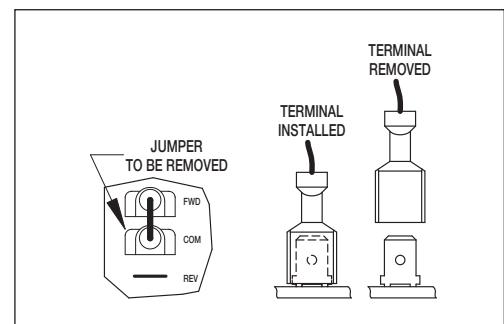
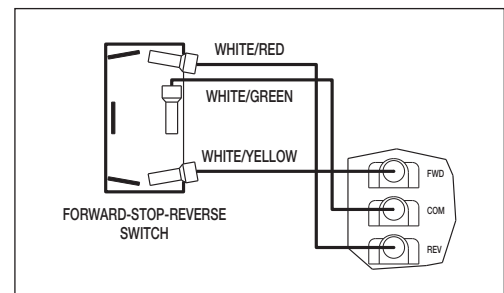


FIGURE 3 - CONNECTION DIAGRAM



KB ELECTRONICS, INC.

12095 NW 39th Street, Coral Springs, FL 33065-2516 • (954) 346-4900 • Fax (954) 346-3377

Outside Florida Call **Toll Free** (800) 221-6570 • **E-mail** – info@kbelectronics.com

www.kbelectronics.com